



ΧΡΥΣΟΥΝ ΜΕΤΑΛΛΙΟΝ
ΑΚΑΔΗΜΙΑΣ ΑΘΗΝΩΝ

ΕΚΠΑΙΔΕΥΤΙΚΟ ΚΕΙΜΕΝΟ
ΑΚΑΔΗΜΙΩΝ ΕΜΠΟΡΙΚΟΥ ΝΑΥΤΙΚΟΥ

ΔΙΑΧΕΙΡΙΣΗ ΚΡΙΣΕΩΝ

ΙΩΑΝΝΑΣ ΣΙΜΩΝΗ

ΠΑΡΑΡΤΗΜΑ II

ΠΛΟΙΑΡΧΩΝ

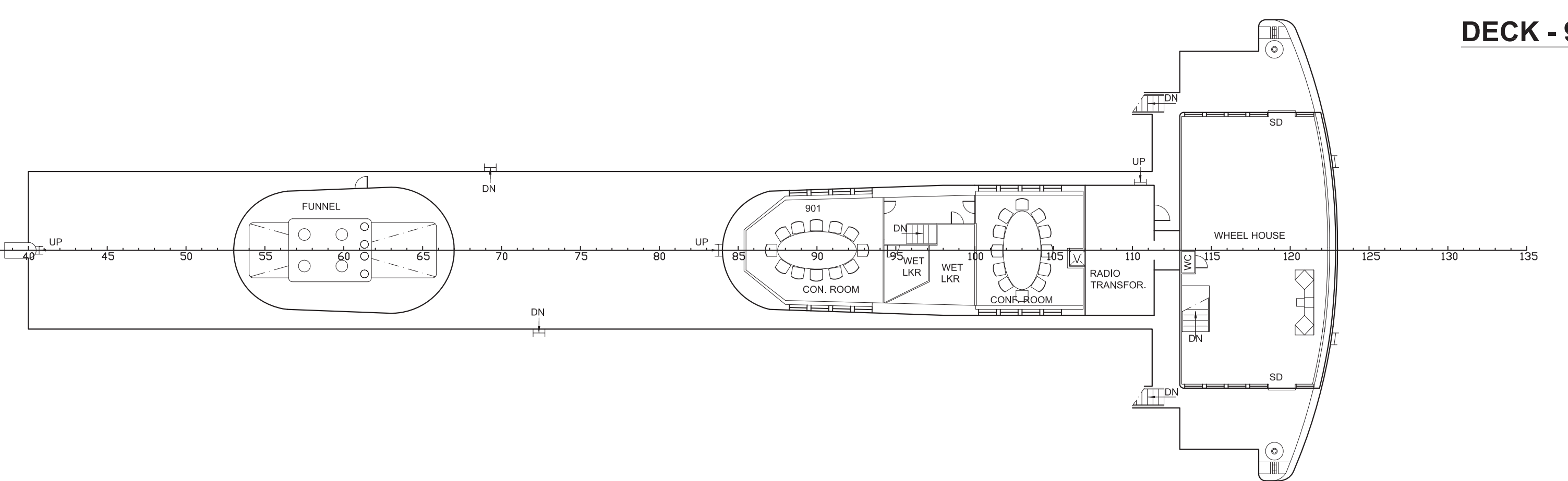
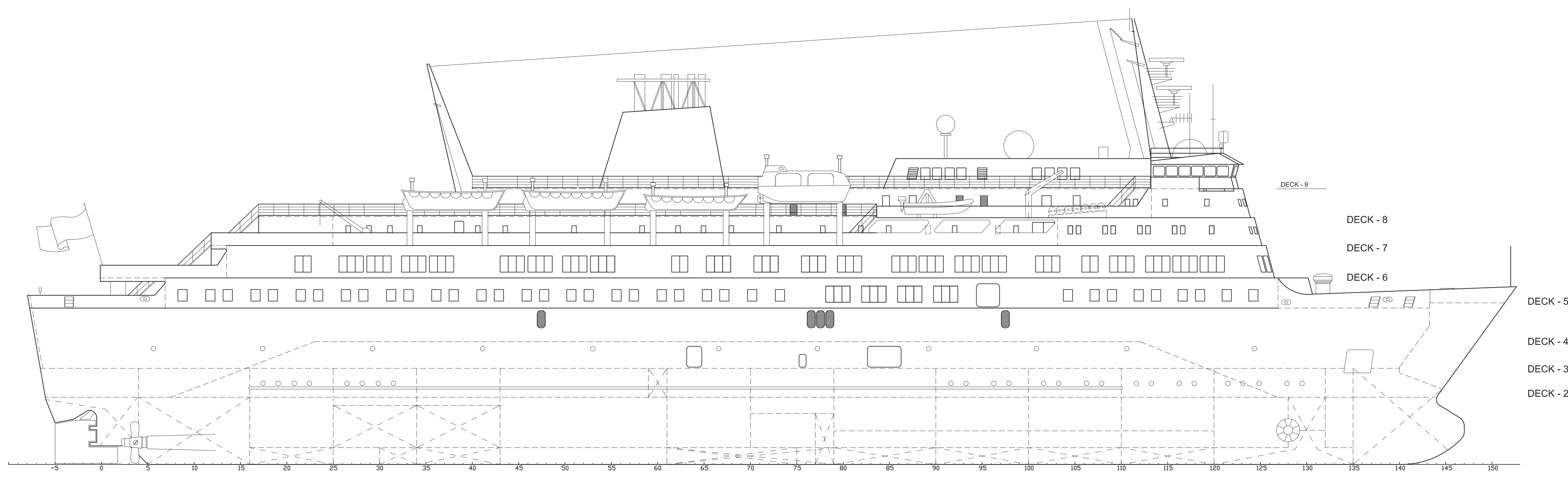




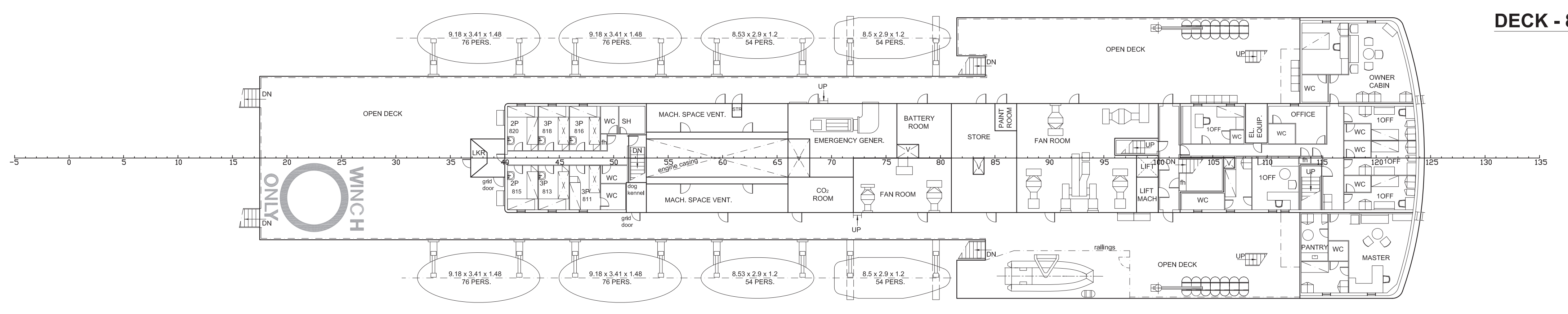
Περιεχόμενα:

- 1) GENERAL ARRANGEMENT (upper decks and profile)
- 2) GENERAL ARRANGEMENT (lower decks)
- 3) FIRE PLAN (symbols)
- 4) FIRE PLAN (profile)
- 5) FIRE PLAN (lower decks)
- 6) FIRE INSULATION (lower decks)
- 7) FIRE PLAN (upper decks)
- 8) FIRE INSULATION (upper decks)
- 9) LIFE SAVING PLAN (lower decks)
- 10) LIFE SAVING PLAN (upper decks and profile)
- 11) DAMAGE CONTROL PLAN

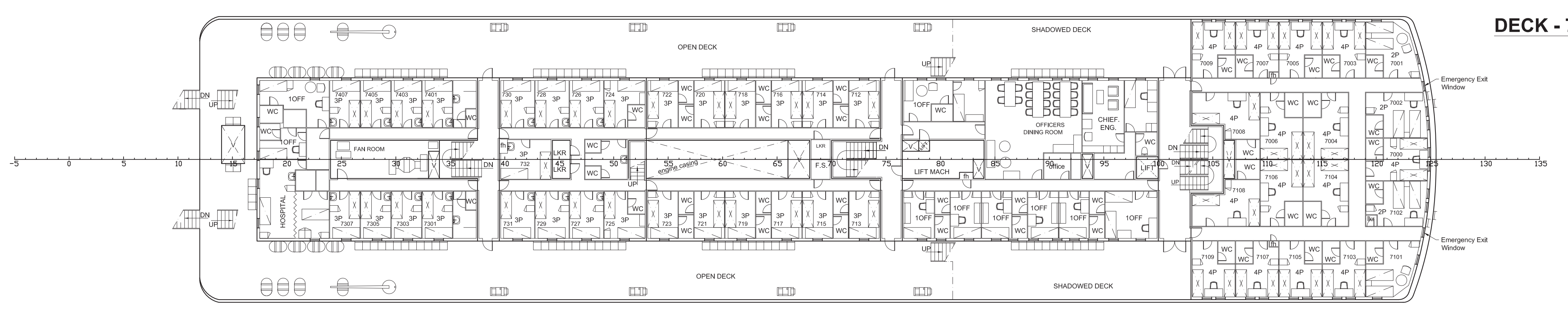
REVISIONS		
REVISION	DATE	DESCRIPTION
A	30-04-2010	DESIGNED IN AUTOCAD
B	09-08-2010	CORRECTIONS FOR THE COMPLIANCE WITH SOLAS 1974
C	30-05-2011	VISIT ON BOARD



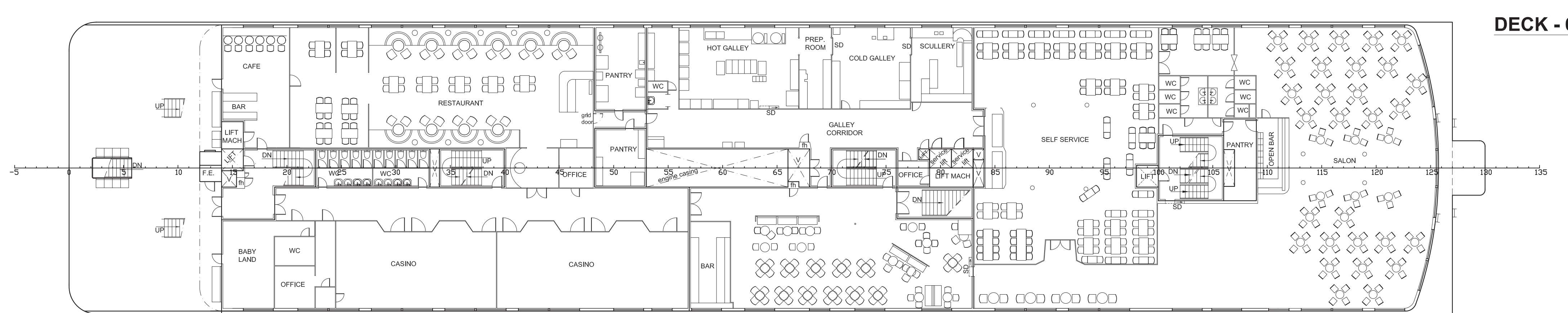
DECK - 9



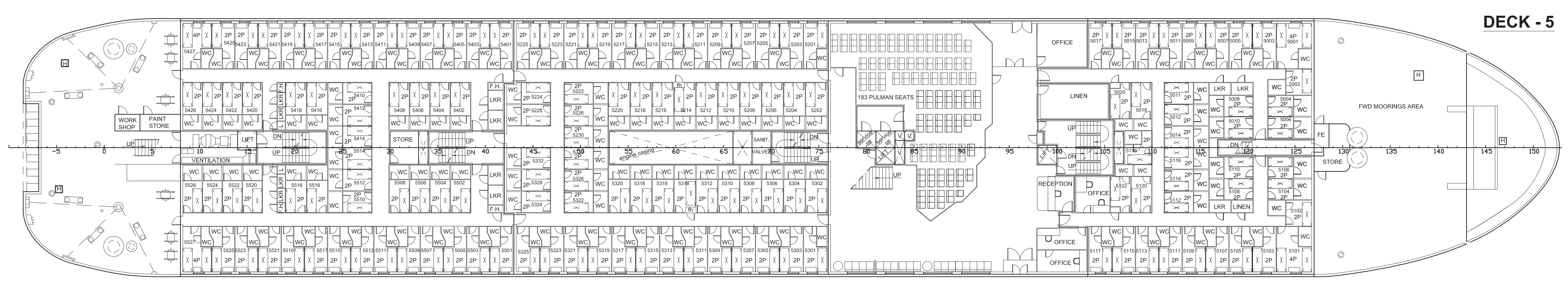
DECK - 8



DECK - 7



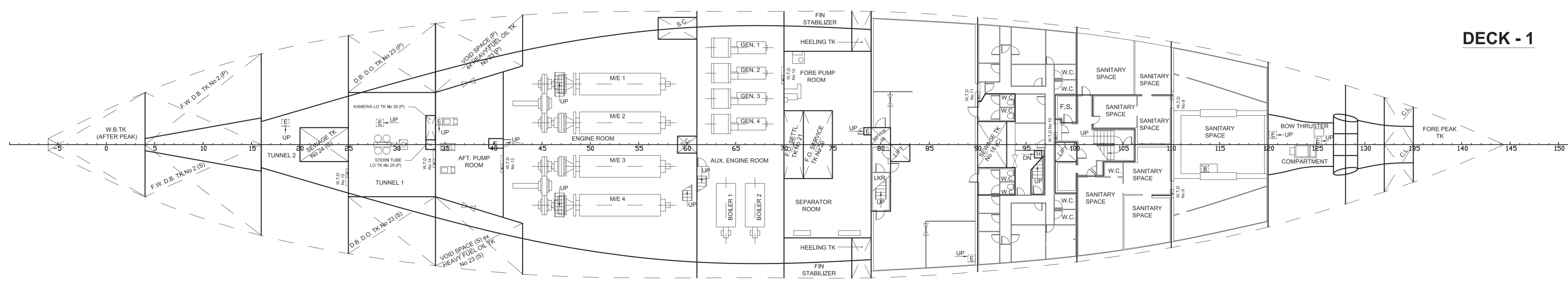
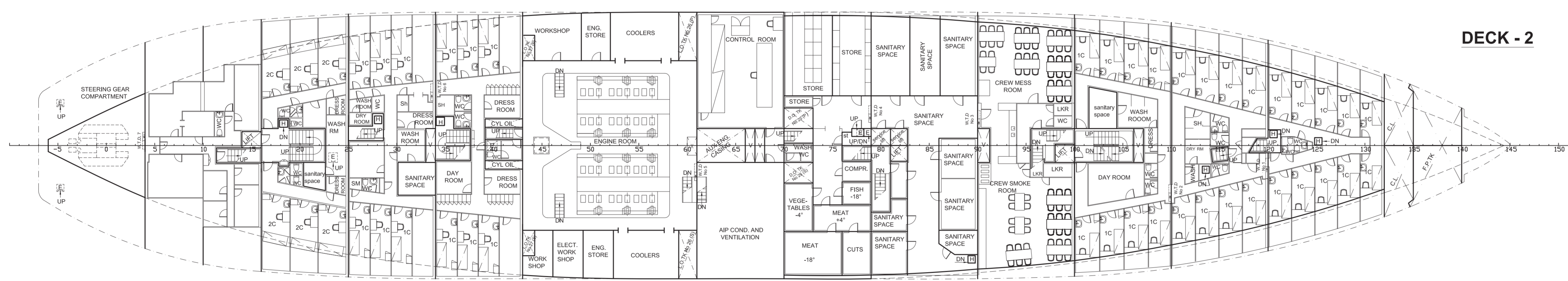
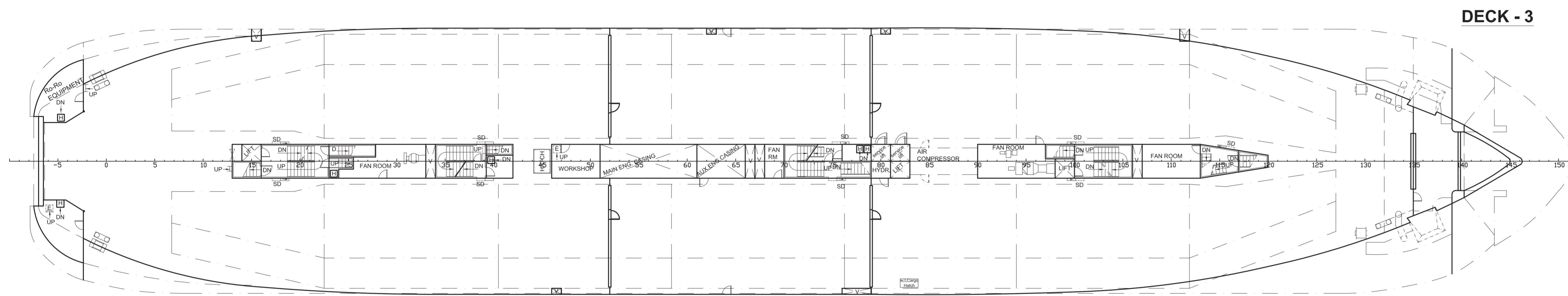
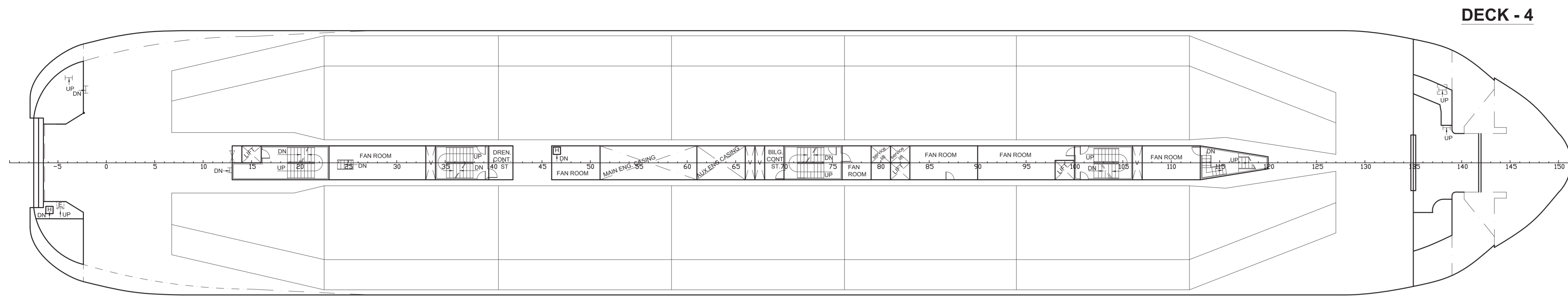
DECK - 6



DECK - 5

PRINCIPAL PARTICULARS	
LENGTH O.A.	122.00 m
LENGTH B.P.	116.13 m
BREADTH(MAX)	22.00 m
DEPTH (Up to Deck-3)	8.30 m

SHIP'S NAME			
TITLE		GENERAL ARRANGEMENT (UPPER DECKS & PROFILE)	
A	SCALE	DATE	DRAWING No
B	1 : 200	MAY 2011	10732 - 05
C			
D			
E			
F			
G			
H			
I			
J			
K			
L			
M			
N			
O			



REVISIONS		
REVISION	DATE	DESCRIPTION
A	30-04-2010	DESIGNED IN AUTOCAD
B	09-08-2010	CORRECTIONS FOR THE COMPLIANCE WITH SOLAS 1974
C	30-05-2011	VISIT ON BOARD

PRINCIPAL PARTICULARS	
LENGTH O.A.	122.00 m
LENGTH B.P.	116.13 m
BREADTH(MAX)	22.00 m
DEPTH (Up to Deck-3)	8.30 m

SHIPS NAME		TITLE	
		GENERAL ARRANGEMENT (LOWER DECKS)	
SCALE	DATE	DRAWING No	
1 : 200	MAY 2010	10732 - 04	
A B C D E	F G H I J	K L M N O	

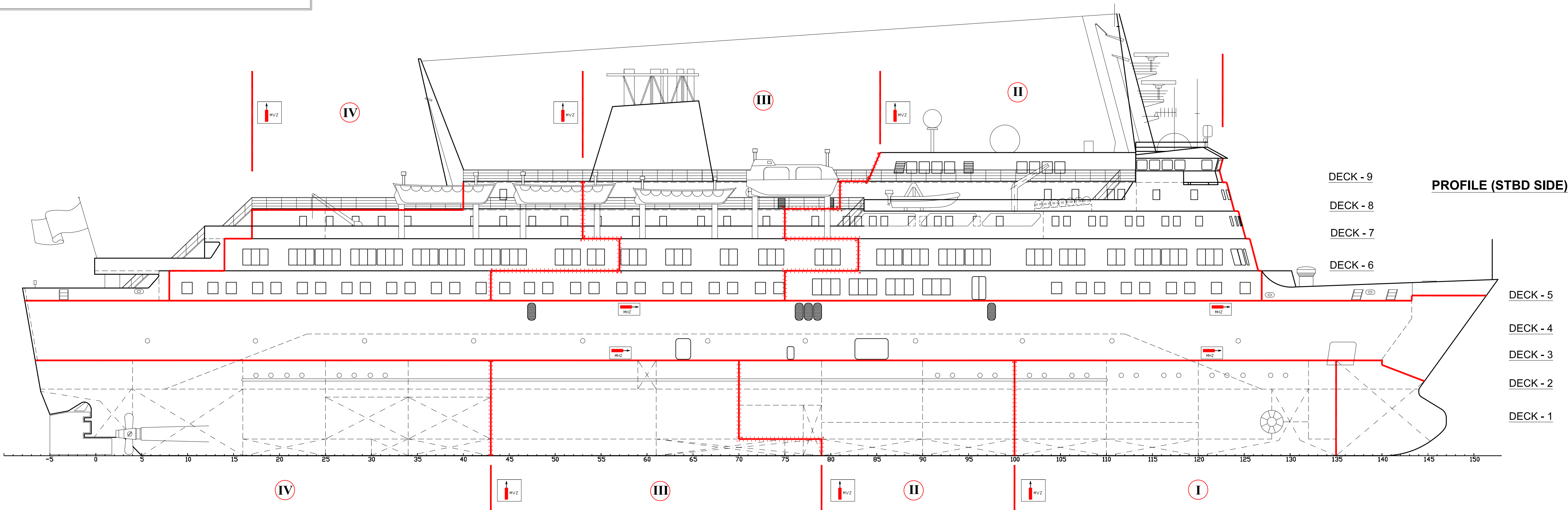
PRINCIPAL PARTICULARS

LENGTH D.A	122.00 m
LENGTH B.P	116.13 m
BREADTH(MAX)	22.00 m
DEPTH (Up to Deck-3)	8.30 m

REVISIONS		
REVISION	DATE	DESCRIPTION
A	04-11-2010	CORRECTIONS DUE TO PRS REMARKS
B	29-11-2010	CORRECTIONS DUE TO PRS REMARKS
C	22-06-2016	CORRECTIONS DUE TO PRS REMARKS
D	05-08-2016	CORRECTIONS DUE TO P.R.S. REMARKS REF.:TM/Swa/101940/592/16 DATED 30-06-2016

FOR SYMBOLS SEE DRW 10732 - 25 Rev. I

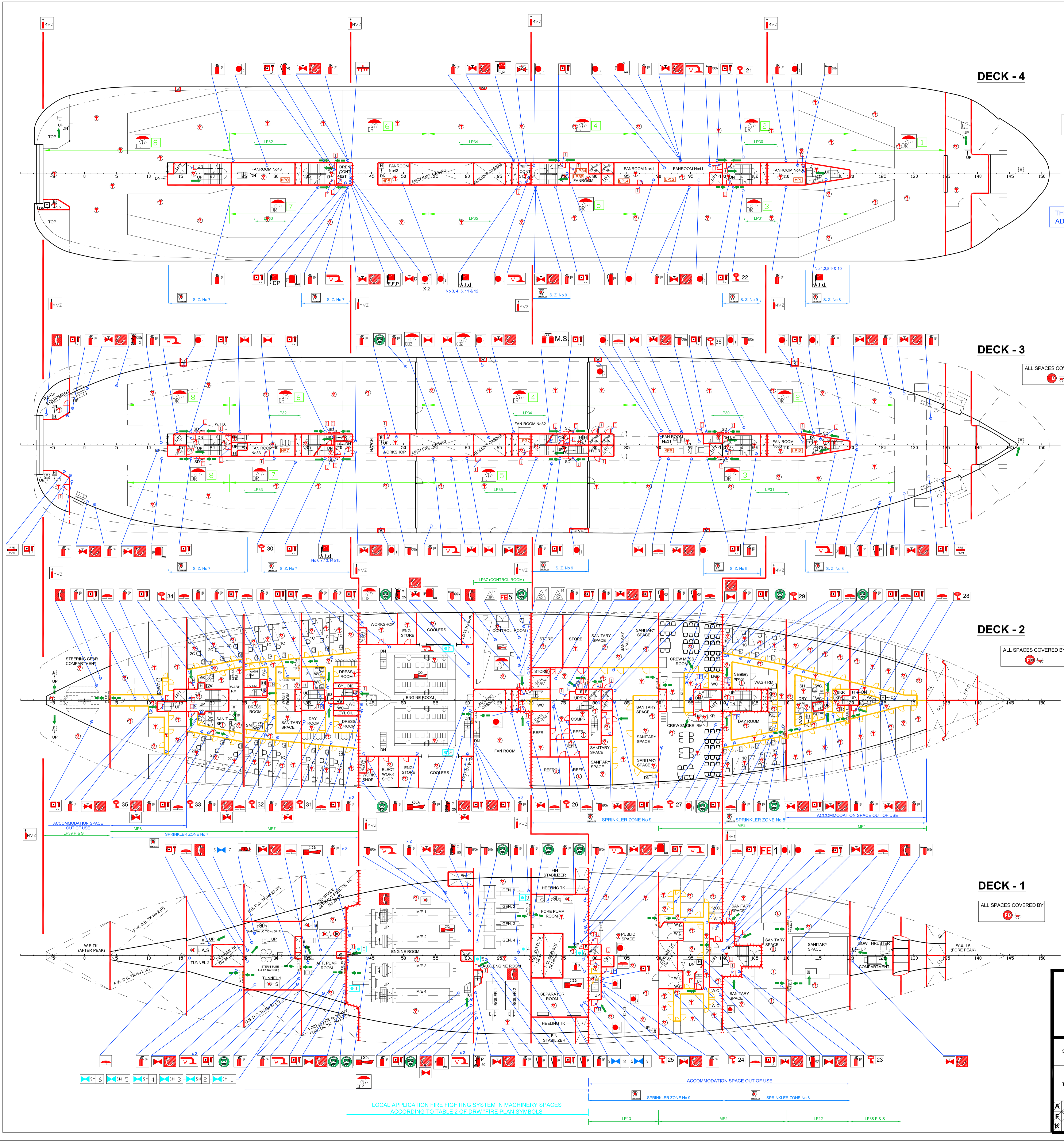
IMD Number : 7224459
SHIP'S CLASS : KM
Ro-Ro/Passenger Ship (2)



PROFILE (STBD SIDE)

SHIP'S NAME			
TITLE		FIRE PLAN (PROFILE)	
A	B	C	D
F	G	H	I
K	L	M	N
SCALE		DATE	DRAWING No
1 : 200		JUNE 2016	10732 - 38

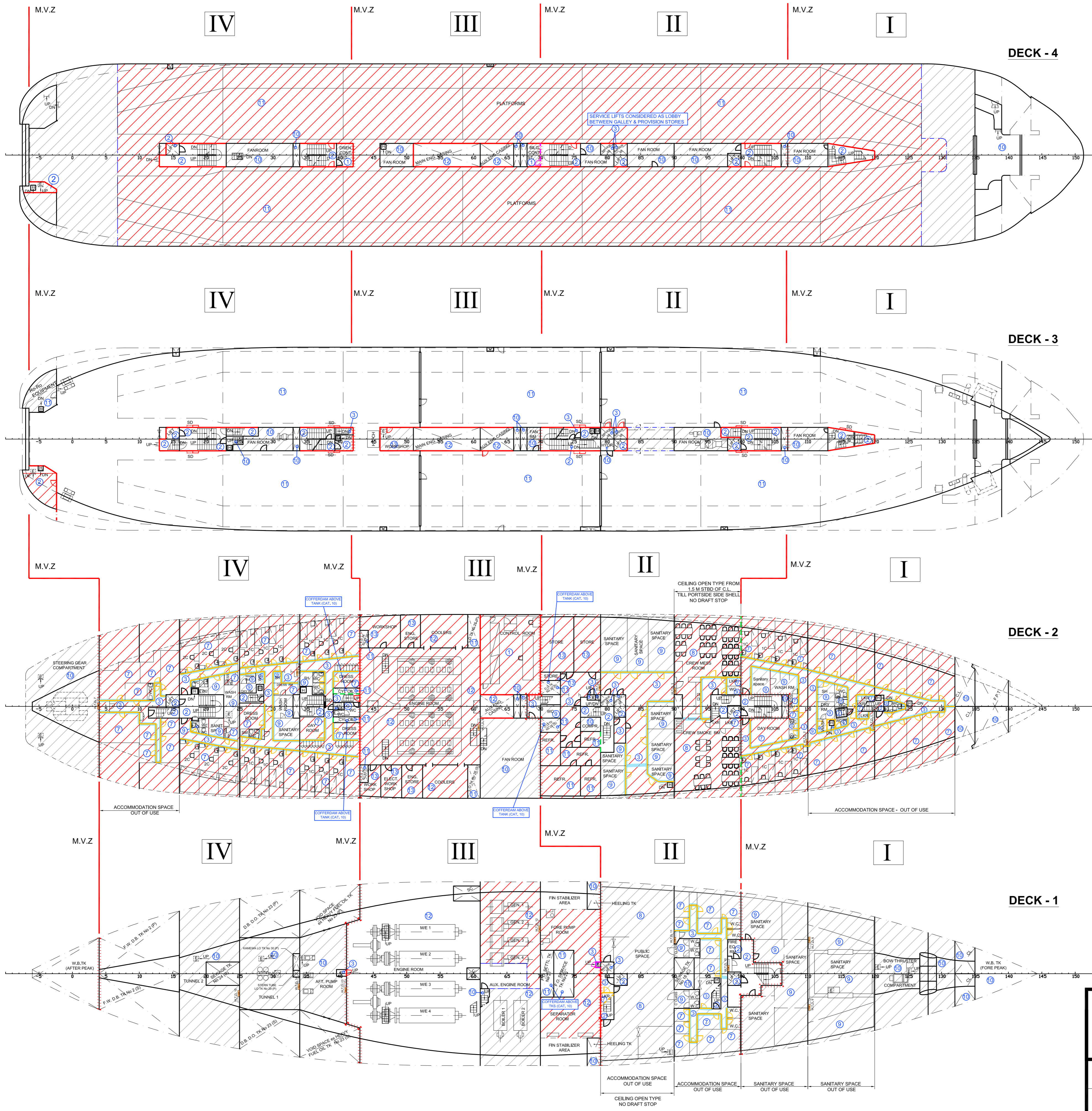
REVISIONS		
REVISION	DATE	DESCRIPTION
H	30-06-2011	PRS EMAIL dated 29-06-2011 Regarding A-CLASS marked with red lines
I	19-03-2012	CORRECTIONS DUE TO PRS REMARKS
J	22-06-2014	CORRECTIONS DUE TO PRS REMARKS
K	05-08-2016	CORRECTIONS DUE TO P.R.S. REMARKS REF.:TM/SwA/101940/592/16 DATED 30-06-2016



PRINCIPAL PARTICULARS	
LENGTH O.A.	122.00 m
LENGTH B.P.	116.13 m
BREADTH(MAX)	22.00 m
DEPTH (Up to Deck-3)	8.30 m

IMO Number : 7224459
SHIP'S CLASS : KM
Ro-Ro/Passenger Ship (2)

SHIP'S NAME			
TITLE	FIRE PLAN (LOWER DECKS)		
SCALE	DATE	DRAWING No	
1 : 200	JUNE 2016	10732 - 16	
A B C D E F G H I J K L M N O			



REVISIONS		
REVISION	DATE	DESCRIPTION
A	16-09-2010	P.R.S. REQUIREMENTS
B	30-05-2011	VISIT ON BOARD
C	08-07-2016	ACCORDING P.R.S. REMARKS

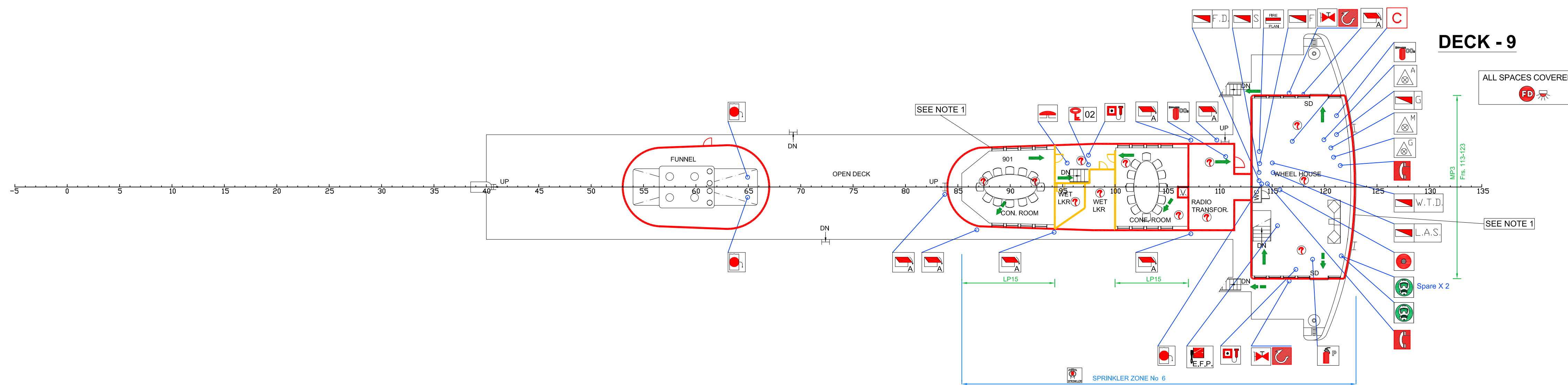
FIRE INSULATION SYMBOLS' LIST	
SYMBOL	EXPLANATION
	A-60 CLASS DECK INSULATION (CEILINGS) A-60 ΚΛΑΣΗΣ ΜΟΝΩΣΗ ΚΑΤΑΣΤΡΩΜΑΤΟΣ (ΟΡΟΦΕΣ)
	A-30 CLASS DECK INSULATION (CEILINGS) A-30 ΚΛΑΣΗΣ ΜΟΝΩΣΗ ΚΑΤΑΣΤΡΩΜΑΤΟΣ (ΟΡΟΦΕΣ)
	A-15 CLASS DECK INSULATION (CEILINGS) A-15 ΚΛΑΣΗΣ ΜΟΝΩΣΗ ΚΑΤΑΣΤΡΩΜΑΤΟΣ (ΟΡΟΦΕΣ)
	A-0 CLASS DECK INSULATION (CEILINGS) A-0 ΚΛΑΣΗΣ ΜΟΝΩΣΗ ΚΑΤΑΣΤΡΩΜΑΤΟΣ (ΟΡΟΦΕΣ)
	CATEGORY OF SPACE
	DRAFT STOP ΚΑΤΙΝΟΦΡΑΚΤΗΣ
	A-0 CLASS BHD A-0 ΚΛΑΣΗΣ ΦΡΑΚΤΗ
	A-60 CLASS BHD A-60 ΚΛΑΣΗΣ ΦΡΑΚΤΗ
	A-30 CLASS BHD A-30 ΚΛΑΣΗΣ ΦΡΑΚΤΗ
	A-15 CLASS BHD A-15 ΚΛΑΣΗΣ ΦΡΑΚΤΗ
	B CLASS PANEL B ΚΛΑΣΗΣ ΧΩΡΙΣΜΑ
	A-0 CLASS FIRE DOOR A-0 ΚΛΑΣΗΣ ΠΥΡΙΜΑΧΗ ΘΥΡΑ
	A-60 CLASS FIRE DOOR A-60 ΚΛΑΣΗΣ ΠΥΡΙΜΑΧΗ ΘΥΡΑ
	A-30 CLASS FIRE DOOR A-30 ΚΛΑΣΗΣ ΠΥΡΙΜΑΧΗ ΘΥΡΑ
	A-15 CLASS FIRE DOOR A-15 ΚΛΑΣΗΣ ΠΥΡΙΜΑΧΗ ΘΥΡΑ
	B CLASS DOOR B ΚΛΑΣΗΣ ΘΥΡΑ
	SLIDING WATER TIGHT DOOR ΥΔΑΤΟΣΤΗΤΗΣ ΣΥΡΟΜΕΝΗ ΘΥΡΑ
	B CLASS PANEL WHICH EXTENDS DECK TO DECK (WITH DRAFT STOP ABOVE) ΧΩΡΙΣΜΑ ΚΛΑΣΗΣ-B ΤΟ ΟΠΟΙΟ ΕΚΤΕΙΝΕΤΑΙ ΑΠΟ ΚΑΤΩΜΑ ΣΕ ΚΑΤΩΜΑ (ΜΕ ΔΡΑΦΤ ΣΤΟΠ)
	MAIN VERTICAL ZONE LIMITS ΟΡΙΑ ΚΥΡΙΑΣ ΚΑΤΑΚΟΡΥΦΗΣ ΖΩΝΗΣ

All linings, ceilings e.t.c. that are not shown at this drawing are made by non-combustible materials.

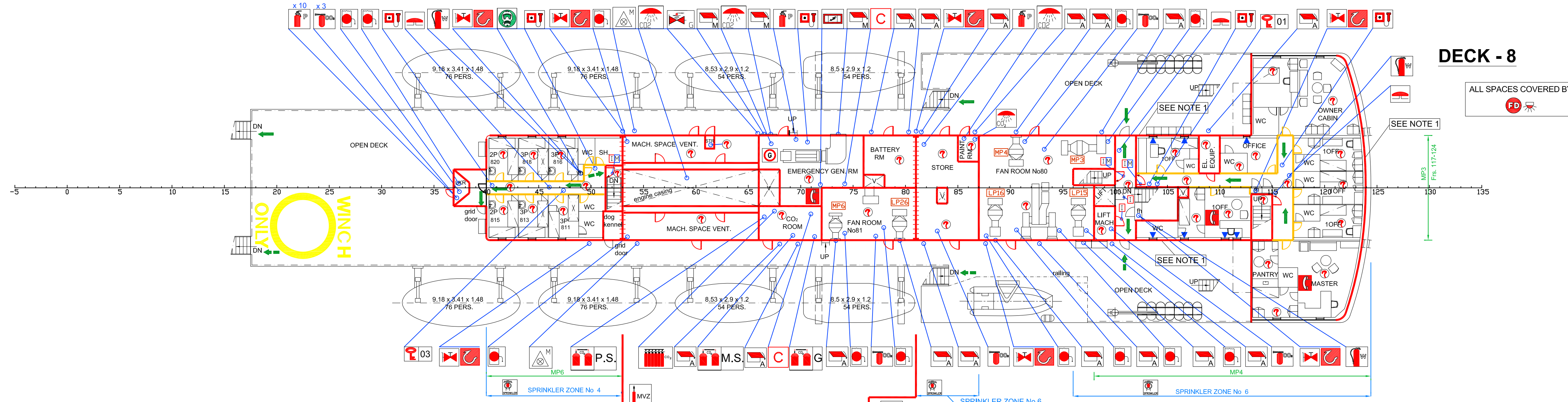
PRINCIPAL PARTICULARS	
LENGTH O.A	122.00 m
LENGTH B.P	116.13 m
BREADTH(MAX)	22.00 m
DEPTH (Up to Deck-3)	8.30 m

SHIP'S NAME			
TITLE		FIRE INSULATION (LOWER DECKS)	
A	B	C	D
E	F	G	H
I	J	K	L
M	N	O	
SCALE	DATE	DRAWING No	
1:200	JULY 2016	10732-34	

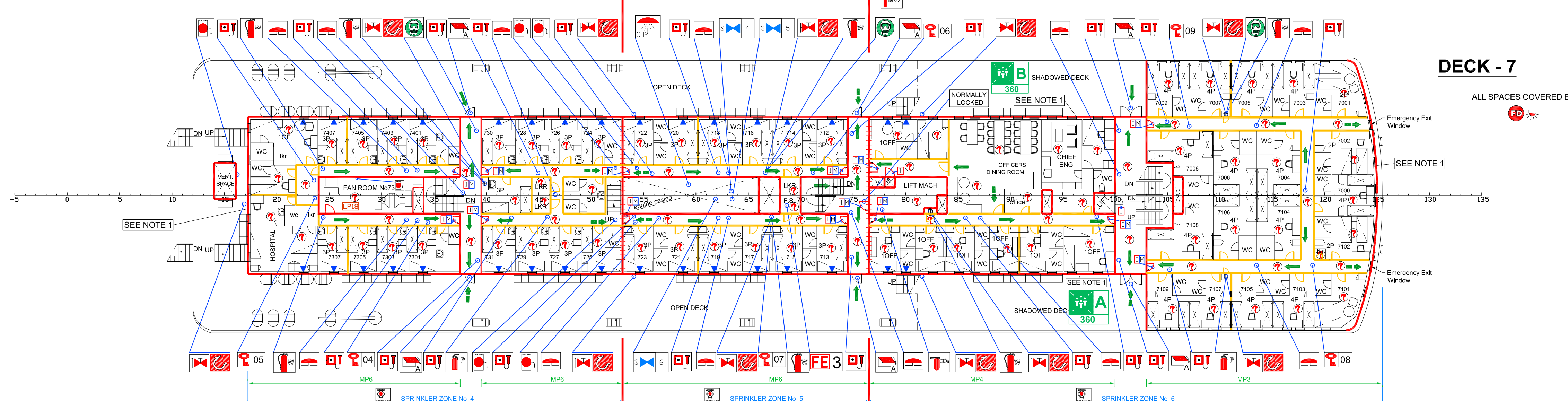
REVISIONS		
REVISION	DATE	DESCRIPTION
I	30-06-2011	PRS EMAIL dated 29-06-2011 Regarding A-CLASS marked with red lines
J	20-03-2012	CORRECTIONS DUE TO P.R.S. REMARKS
K	22-06-2016	CORRECTIONS DUE TO P.R.S. REMARKS
L	05-08-2016	CORRECTIONS DUE TO P.R.S. REMARKS REF: TMSwa101940/592/16 DATED 30-06-2016



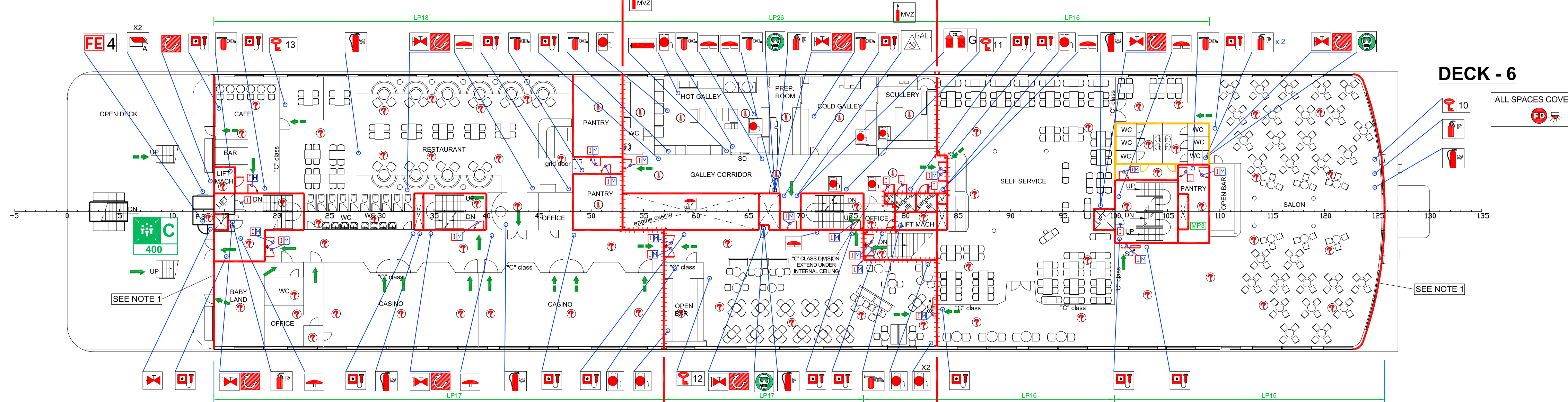
DECK - 9



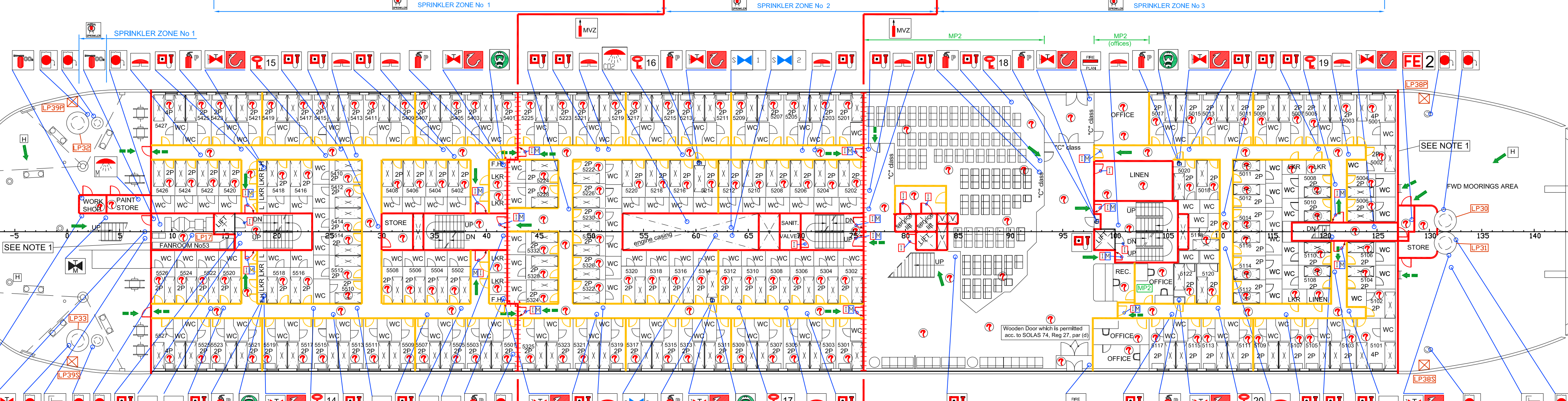
DECK - 8



DECK - 7



DECK - 6



DECK - 5

NOTE 1 : ACCORDING SOLAS 74 Ch. II-2, Reg. 23 Par.(b) THE REQUIREMENTS FOR "A" CLASS INTEGRITY FOR THE OUTER BOUNDARIES OF A SHIP SHALL NOT APPLY TO GLASS PARTITION, WINDOWS AND SIDECUTTLIES. SIMILARLY, THE REQUIREMENTS FOR "A" CLASS INTEGRITY SHALL NOT APPLY TO EXTERIOR DOORS IN SUPER-STRUCTURES AND DECK HOUSES"

IMO Number : 7224459
SHIP'S CLASS : KM
Ro-Ro/Passenger Ship (2)

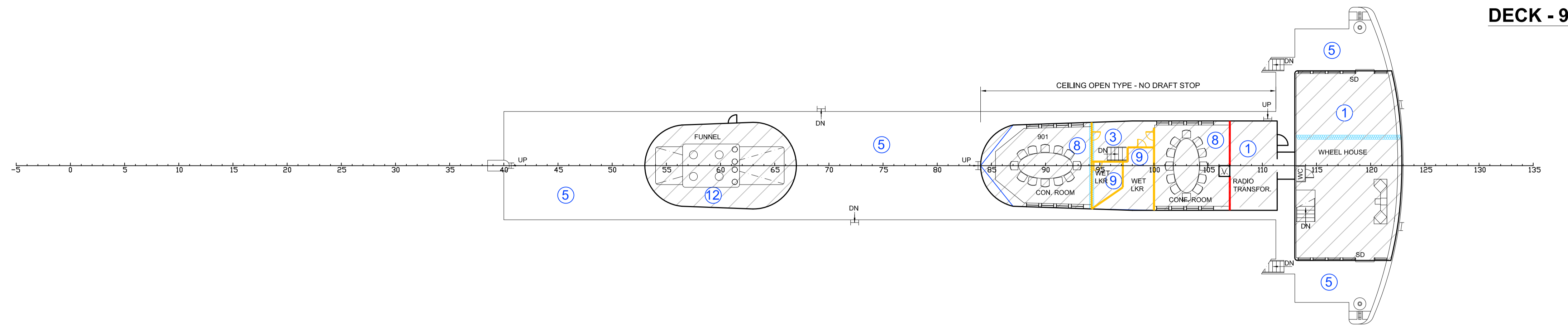
PRINCIPAL PARTICULARS

LENGTH O.A	122.00 m
LENGTH B.P	116.13 m
BREADTH(MAX)	22.00 m
DEPTH (Up to Deck-3)	8.30 m

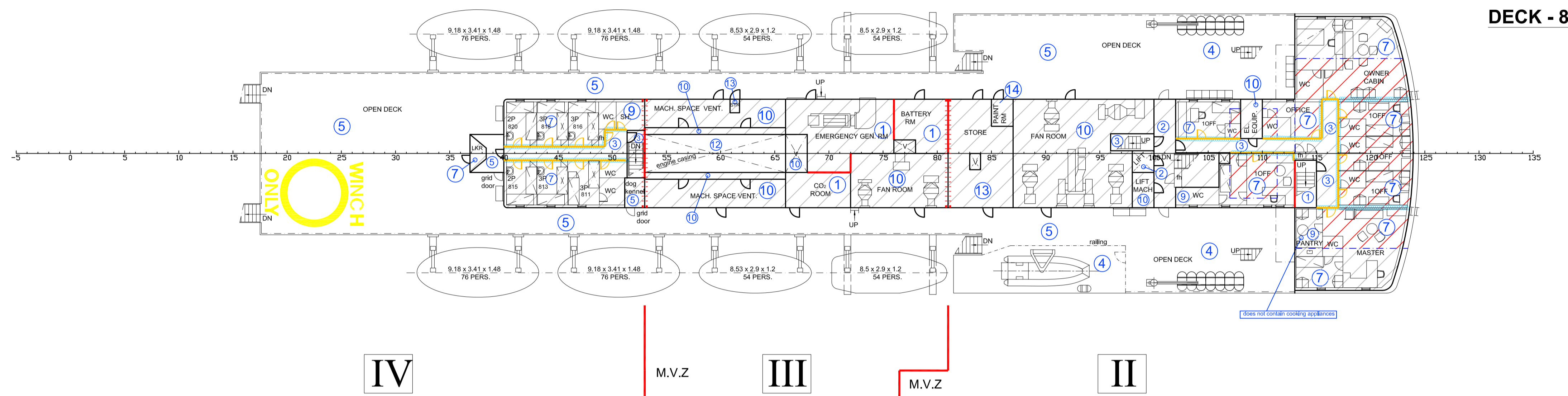
SHIP'S NAME			
TITLE			
SCALE			
DATE			
DRAWING No			
FIRE PLAN (UPPER DECKS)			
A	B	C	D
E	F	G	H
I	J	K	L
M	N	O	
1 : 200		JUNE 2016	
10732 - 17			

PAINT STORE
PROTECTED BY DRENCHING SYSTEM
CONNECTED TO FIRE LINE

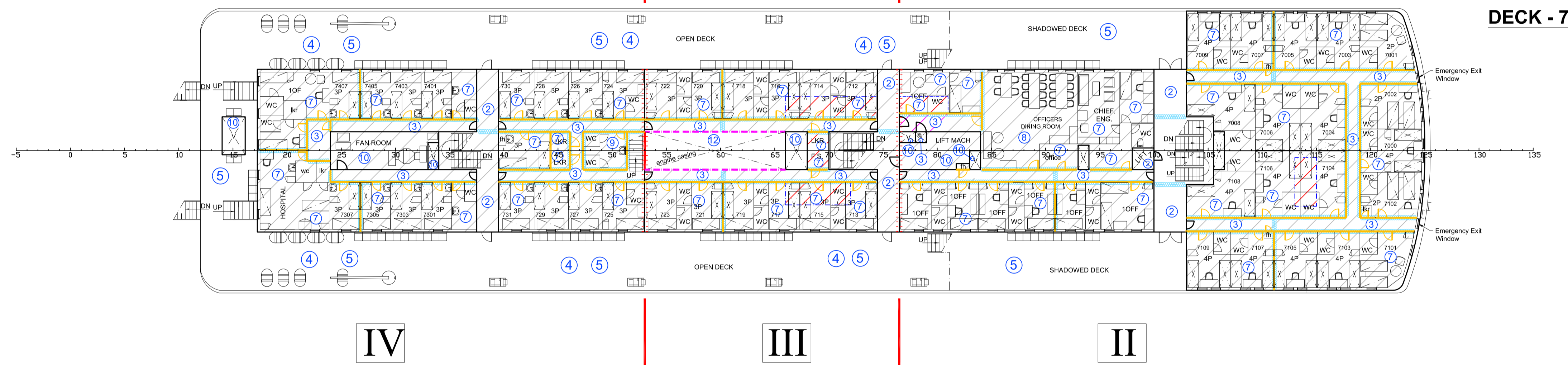
REVISIONS		
REVISION	DATE	DESCRIPTION
A	30-05-2011	VISIT ON BOARD
B	15-06-2011	PRS SURVEY STATUS 14-06-2011
C	08-07-2016	ACCORDING PRS REMARKS
D	11-07-2016	ACCORDING PRS REMARKS



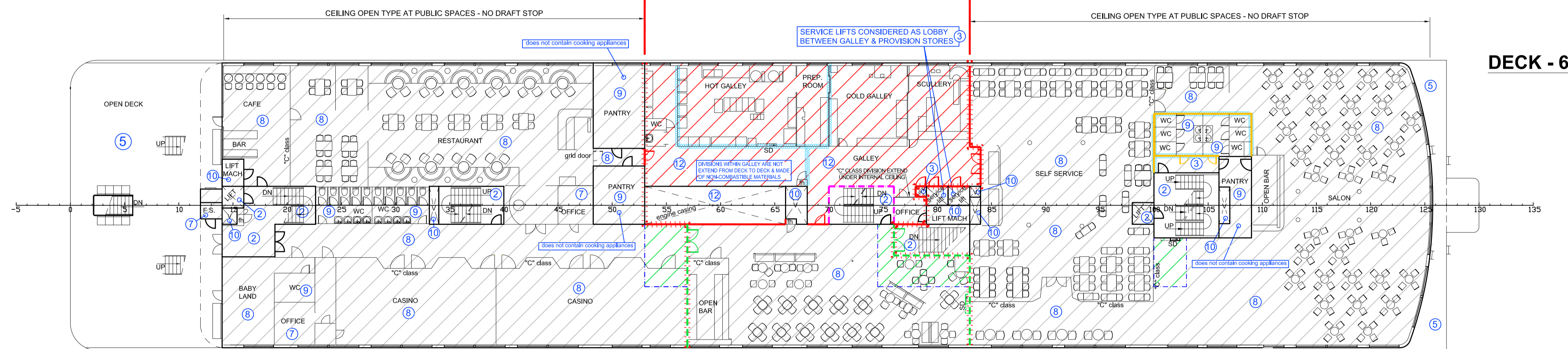
DECK - 9



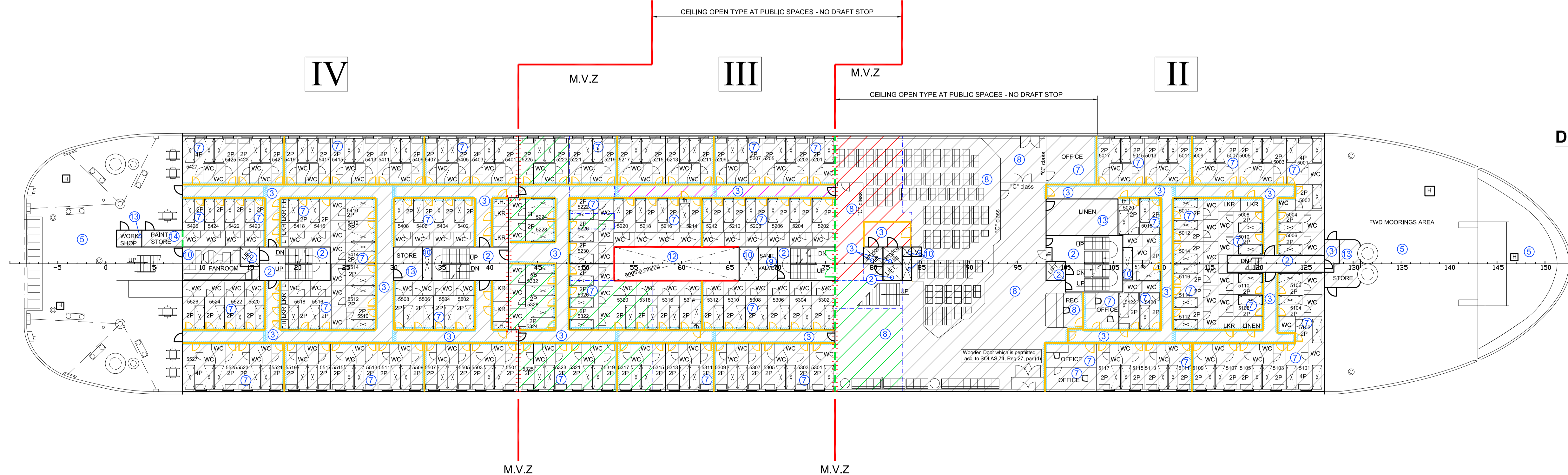
DECK - 8



DECK - 7



DECK - 6



DECK - 5

All linings, ceilings e.t.c. that are not shown at this drawing are made by non-combustible materials.

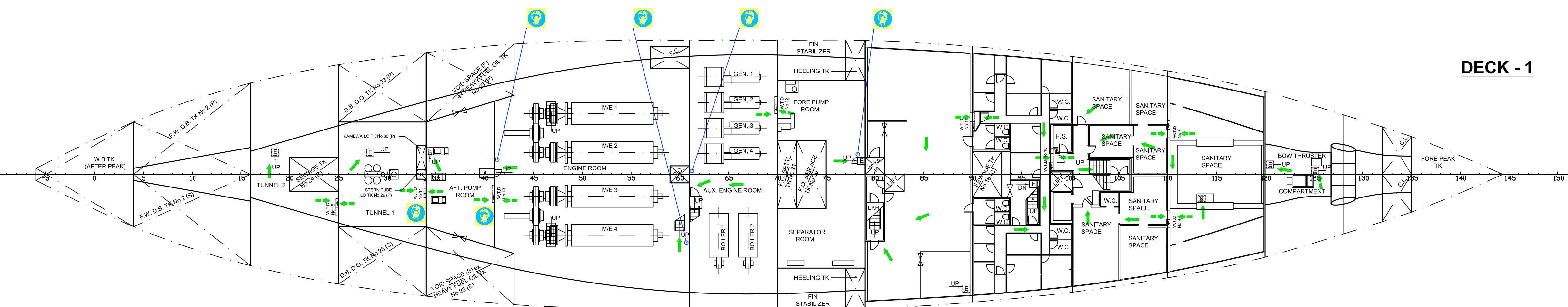
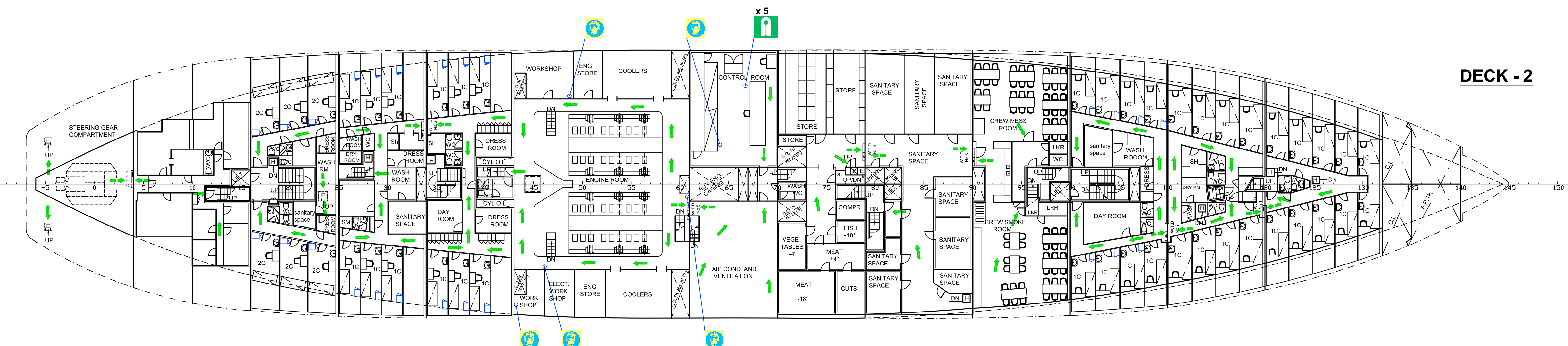
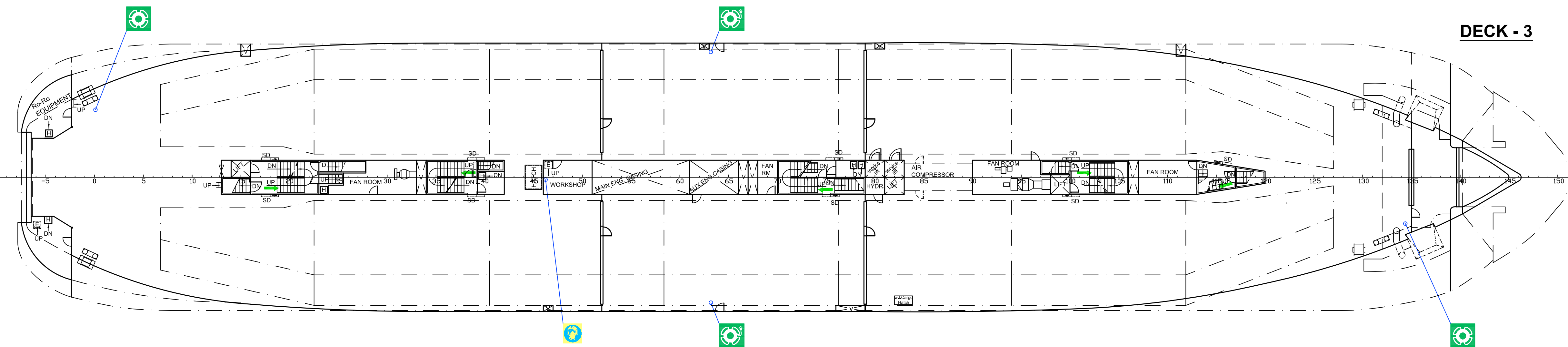
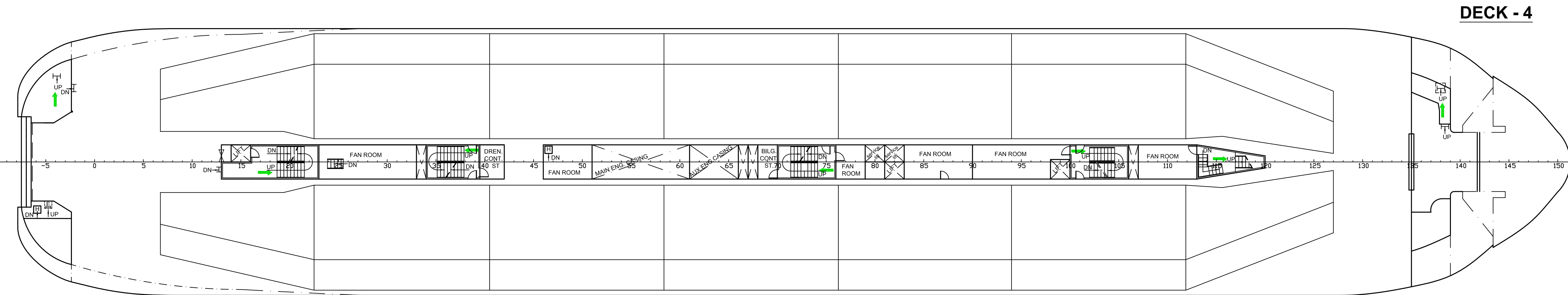
FIRE INSULATION SYMBOLS' LIST

SYMBOL	EXPLANATION
	A-60 CLASS DECK INSULATION (CEILINGS) A-60 ΚΛΑΣΗΣ ΜΟΝΩΣΗ ΚΑΤΑΣΤΡΩΜΑΤΟΣ (ΟΡΟΦΕΣ)
	A-30 CLASS DECK INSULATION (CEILINGS) A-30 ΚΛΑΣΗΣ ΜΟΝΩΣΗ ΚΑΤΑΣΤΡΩΜΑΤΟΣ (ΟΡΟΦΕΣ)
	A-15 CLASS DECK INSULATION (CEILINGS) A-15 ΚΛΑΣΗΣ ΜΟΝΩΣΗ ΚΑΤΑΣΤΡΩΜΑΤΟΣ (ΟΡΟΦΕΣ)
	A-0 CLASS DECK INSULATION (CEILINGS) A-0 ΚΛΑΣΗΣ ΜΟΝΩΣΗ ΚΑΤΑΣΤΡΩΜΑΤΟΣ (ΟΡΟΦΕΣ)
	CATEGORY OF SPACE
	DRAFT STOP ΚΑΤΙΝΟΦΡΑΚΤΗΣ
	A-0 CLASS BHD A-0 ΚΛΑΣΗΣ ΦΡΑΚΤΗ
	A-60 CLASS BHD A-60 ΚΛΑΣΗΣ ΦΡΑΚΤΗ
	A-30 CLASS BHD A-30 ΚΛΑΣΗΣ ΦΡΑΚΤΗ
	A-15 CLASS BHD A-15 ΚΛΑΣΗΣ ΦΡΑΚΤΗ
	B CLASS PANEL B ΚΛΑΣΗΣ ΧΟΡΙΣΜΑ
	A-0 CLASS FIRE DOOR A-0 ΚΛΑΣΗΣ ΠΥΡΙΜΑΧΗ ΘΥΡΑ
	A-60 CLASS FIRE DOOR A-60 ΚΛΑΣΗΣ ΠΥΡΙΜΑΧΗ ΘΥΡΑ
	A-30 CLASS FIRE DOOR A-30 ΚΛΑΣΗΣ ΠΥΡΙΜΑΧΗ ΘΥΡΑ
	A-15 CLASS FIRE DOOR A-15 ΚΛΑΣΗΣ ΠΥΡΙΜΑΧΗ ΘΥΡΑ
	B CLASS DOOR B ΚΛΑΣΗΣ ΘΥΡΑ
	SLIDING WATER TIGHT DOOR ΥΔΑΤΟΣΤΗΓΗΣ ΣΥΡΟΜΕΝΗ ΘΥΡΑ
	B CLASS PANEL WHICH EXTENDS DECK TO DECK (WITH DRAFT STOP ABOVE) ΧΟΡΙΣΜΑ ΚΛΑΣΗΣ-B ΤΟ ΟΤΙΟΥ ΕΚΤΕΝΕΤΑΙ ΑΠΟ ΚΑΤΑΜΑ ΣΕ ΚΑΤΑΜΑ (ΜΕ DRAFT STOP)
	MAIN VERTICAL ZONE LIMITS ΟΡΙΑ ΚΥΡΙΑΣ ΚΑΤΑΚΟΡΥΦΗΣ ΖΩΝΗΣ

PRINCIPAL PARTICULARS

LENGTH O.A	122.00 m
LENGTH B.P	116.13 m
BREADTH(MAX)	22.00 m
DEPTH (Up to Deck-3)	8.30 m

SHIP'S NAME			
TITLE	FIRE INSULATION (UPPER DECKS)		
A B C D E	SCALE	DATE	DRAWING NO
F G H I J	1 : 200	JULY 2016	10732 - 35
K L M N O			



REVISIONS		
REVISION	DATE	DESCRIPTION
A	06-04-2010	INSTALLATION OF (2) CRONES FOR FOR (300) PERSON
B	18-05-2010	DESIGNED IN AUTOCAD

PRINCIPAL PARTICULARS	
LENGTH O.A	122.00 m
LENGTH B.P	116.13 m
BREADTH(MAX)	22.00 m
DEPTH (Up to Deck-3)	8.30 m

SHIP'S NAME			
TITLE	LIFE SAVING PLAN (LOWER DECKS)		
SCALE	DATE	DRAWING No	
1 : 200	OCT. 2015	10732 - 09	

CALCULATION OF REQUIRED LIFE SAVING MEANS FOR SHORT INTERNATIONAL VOYAGES		
FOR 1120 PERSONS		
1 OPEN TYPE LIFE BOAT RESCUE : 1 x 54 PERSONS	=	54 PERSONS
1 OPEN TYPE LIFE BOAT : 1 x 54 PERSONS	=	54 PERSONS
2 SEMI CLOSED TYPE LIFE BOATS : 2 x 54 PERSONS	=	108 PERSONS
4 OPEN TYPE LIFE BOATS : 4 x 76 PERSONS	=	304 PERSONS
24 REVERSIBLE TYPE LIFE RAFTS WITH LAUNCHING DEVICE : 24 x 25 PERSONS	=	600 PERSONS
TOTAL		1120 PERSONS
REQUIRED ADDITIONAL LIFE RAFTS FOR 15% OF PERSONS IN LIFE BOATS = 168 PERSONS = 24 PER.		
EXIST ADDITIONAL LIFE RAFTS : 3 LR WITH LAUNCHING DEVICE (25P) = 3x25 = 75 PER. = 52 PER.		

REVISIONS		
REVISION	DATE	DESCRIPTION
C	14-09-2010	INSTALLATION OF (3) LIFE BUOYANT APPAR. & (27) INFANT LIFE JACKETS
D	24-03-2015	RE-ARRANGEMENT OF LIFE JACKETS
E	26-02-2018	DECREASE 3 LIFE RAFTS & 1 RADAR TRANSPONDER
F	06-03-2018	ACC. PRS REMARKS (DATED 06-03-2018)

LIFE SAVING SYMBOLS		
QUAN. NO.	SYMBOL	DESCRIPTION
9		LIFEBUOY ΚΥΚΛΙΚΟ ΣΩΣΤΙΚΟ
4		LIFEBUOY WITH LINE 30 m ΚΥΚΛΙΚΟ ΣΩΣΤΙΚΟ ΜΕ ΣΧΟΛΗ 30 m
9		LIFEBUOY WITH LIGHT ΚΥΚΛΙΚΟ ΣΩΣΤΙΚΟ ΜΕ ΦΩΣ
2		LIFEBUOY WITH LIGHT & SMOKE ΚΥΚΛΙΚΟ ΣΩΣΤΙΚΟ ΜΕ ΦΩΣ & ΚΑΠΝΟ
2		SEMI CLOSED TYPE MOTOR LIFE BOAT (54 PERSONS EACH) ΗΜΙ-ΑΝΟΙΚΤΟΥ ΤΥΠΟΥ ΜΗΧΑΝΟΚΙΝΗΤΗ ΣΩΣΤΙΚΙΑ ΛΕΜΒΟΣ (54 ΑΤΟΜΩΝ ΕΚΑΣΤΗ)
1		OPEN TYPE MOTOR LIFE BOAT (54 PERSONS) ΑΝΟΙΚΤΟΥ ΤΥΠΟΥ ΜΗΧΑΝΟΚΙΝΗΤΗ ΣΩΣΤΙΚΙΑ ΛΕΜΒΟΣ (54 ΑΤΟΜΩΝ)
1		OPEN TYPE MOTOR LIFE BOAT RESCUE (54 PERSONS) ΑΝΟΙΚΤΟΥ ΤΥΠΟΥ ΜΗΧΑΝΟΚΙΝΗΤΗ ΣΩΣΤΙΚΙΑ ΛΕΜΒΟΣ ΔΙΑΣΩΣΕΩΣ (54 ΑΤΟΜΩΝ)
4		OPEN TYPE MOTOR LIFE BOAT (76 PERSONS EACH) ΑΝΟΙΚΤΟΥ ΤΥΠΟΥ ΜΗΧΑΝΟΚΙΝΗΤΗ ΣΩΣΤΙΚΙΑ ΛΕΜΒΟΣ (76 ΑΤΟΜΩΝ ΕΚΑΣΤΗ)
27		LIFE RAFT WITH LAUNCHING DEVICE (25 PERSONS EACH) ΓΡΗΓΟΡΟ ΣΩΣΤΙΚΟ ΣΧΕΔΙΑ ΜΕ ΜΕΣΟ ΚΑΘΑΡΠΕΣΕΩΣ (25 ΑΤΟΜΩΝ ΕΚΑΣΤΗ)
1		FAST RESCUE BOAT ΤΑΧΥΠΛΟΗ ΛΕΜΒΟΣ ΠΕΡΕΥΛΟΓΗΣ
1		MEAN OF RESCUE ΜΕΣΟ ΔΙΑΣΩΣΗΣ
3		ASSEMBLY STATION ΣΤΑΘΜΟΣ ΣΥΚΕΝΤΡΩΣΗΣ
12		EMBARKATION LADDER ΣΚΟΠΗΤΗ ΣΚΑΛΙΑ ΕΠΙΒΑΣΗΣ
1186		LIFE JACKET WITH LIGHT & WHISTLE (SEE TABLE 2) ΑΤΟΜΙΚΟ ΣΩΣΤΙΚΟ ΜΕ ΦΩΣ & ΣΦΥΡΑΚΤΡΑ (ΒΛΕΠΕ ΠΙΝΑΚΑ 2)
1182		CHILD'S LIFE JACKET WITH LIGHT & WHISTLE (SEE TABLE 2) ΠΑΙΔΙΚΟ ΣΩΣΤΙΚΟ ΜΕ ΦΩΣ & ΣΦΥΡΑΚΤΡΑ (ΒΛΕΠΕ ΠΙΝΑΚΑ 2)
27		INFANT LIFE JACKET ACCORDING TO LSA CODE (SEE TABLE 2) ΣΠΕΡΜΟ ΑΤΟΜΙΚΟ ΣΩΣΤΙΚΟ ΣΥΜΦΩΝΑ ΜΕ LSA CODE (ΒΛΕΠΕ ΠΙΝΑΚΑ 2)
3		LIFE BUOYANT APPARATUS (20 PERSONS EACH) 1120 x 5% = 56. EXIST 3 x 20P = 60 x 56 = 60x56 ΤΥΧΕΤΩΝ ΣΩΣΤΙΚΩΝ (20 ΑΤΟΜΩΝ ΕΚΑΣΤΗ) 1120 x 5% = 56. ΥΠΑΡΧΟΥΝ 3x20P = 60x56
2		EPRB ΠΑΡΑΦΟΡΟΣ ΕΚΤΟΜΩΣΗΣ ΘΕΣΗΣ
9		RADAR TRANSPONDER ΑΝΑΚΟΛΛΗΤΡΑΙΣ ΡΑΔΑΡ
4		LINE THROWING APPLIANCE ΟΡΜΟΒΟΛΟΣ ΣΥΣΤΗΜΑ
3		TWO-WAY VHF RADIO TELEPHONE APPARATUS ΣΥΣΤΗΜΑ ΑΝΑΒΙΒΡΩΣΗΣ ΡΑΔΙΟΤΗΛΕΦΩΝΙΚΗΣ ΕΠΙΚΟΙΝΩΝΙΑΣ
48		ROCKET PARACHUTE FLARES ΣΤΟΙΧΙΔΙΑ ΑΝΕΙΣΤΙΣΤΟΥ
21		IMMERSION SUIT (SEE TABLE 3) ΣΤΟΛΗ ΕΜΒΑΠΤΙΣΕΩΣ (ΒΛ. ΠΙΝΑΚΑ 3)
396		THERMAL PROTECTIVE AID FOR (SEE TABLE 1) ΘΕΡΜΙΚΟ ΠΡΟΤΕΛΕΤΥΚΟ ΒΟΗΘΗΜΑ (ΒΛ. ΠΙΝΑΚΑ 1)
25		EMERGENCY ESCAPE BREATHING DEVICE ΑΝΑΠΝΕΥΣΤΗΡΑΣ ΣΥΣΤΗΜΑ ΔΙΑΣΩΣΗΣ ΑΝΑΚΗΣ
-		PRIMARY MEANS OF ESCAPE ΚΥΡΙΑ ΔΙΑΣΩΣΗ
-		SECONDARY MEANS OF ESCAPE ΔΕΥΤΕΡΕΥΟΥΣΑ ΔΙΑΣΩΣΗ

SUBDIVISION FACTOR F = 0.5
ΣΥΝΤΕΛΕΣΤΗΣ ΥΠΟΔΙΑΙΡΕΣΕΩΣ F = 0.5

ASSEMBLY STATION ΣΤΑΘΜΟΣ ΣΥΚΕΝΤΡΩΣΗΣ	PASSENGERS ΕΠΙΒΑΤΕΣ	CREW ΠΛΗΡΩΜΑ	PERSONS ΑΤΟΜΑ
A	346	14	360
B	346	14	360
C	386	14	400
TOTAL	1078	42	1120

TABLE 1 ΠΙΝΑΚΑΣ 1	
THERMAL PROTECTIVE AIDS POSITIONS	
M.L.B. No 3	51
M.L.B. No 4	51
M.L.B. No 5	73
M.L.B. No 6	73
M.L.B. No 7	73
M.L.B. No 8	73
F.R.B.	2
TOTAL	396

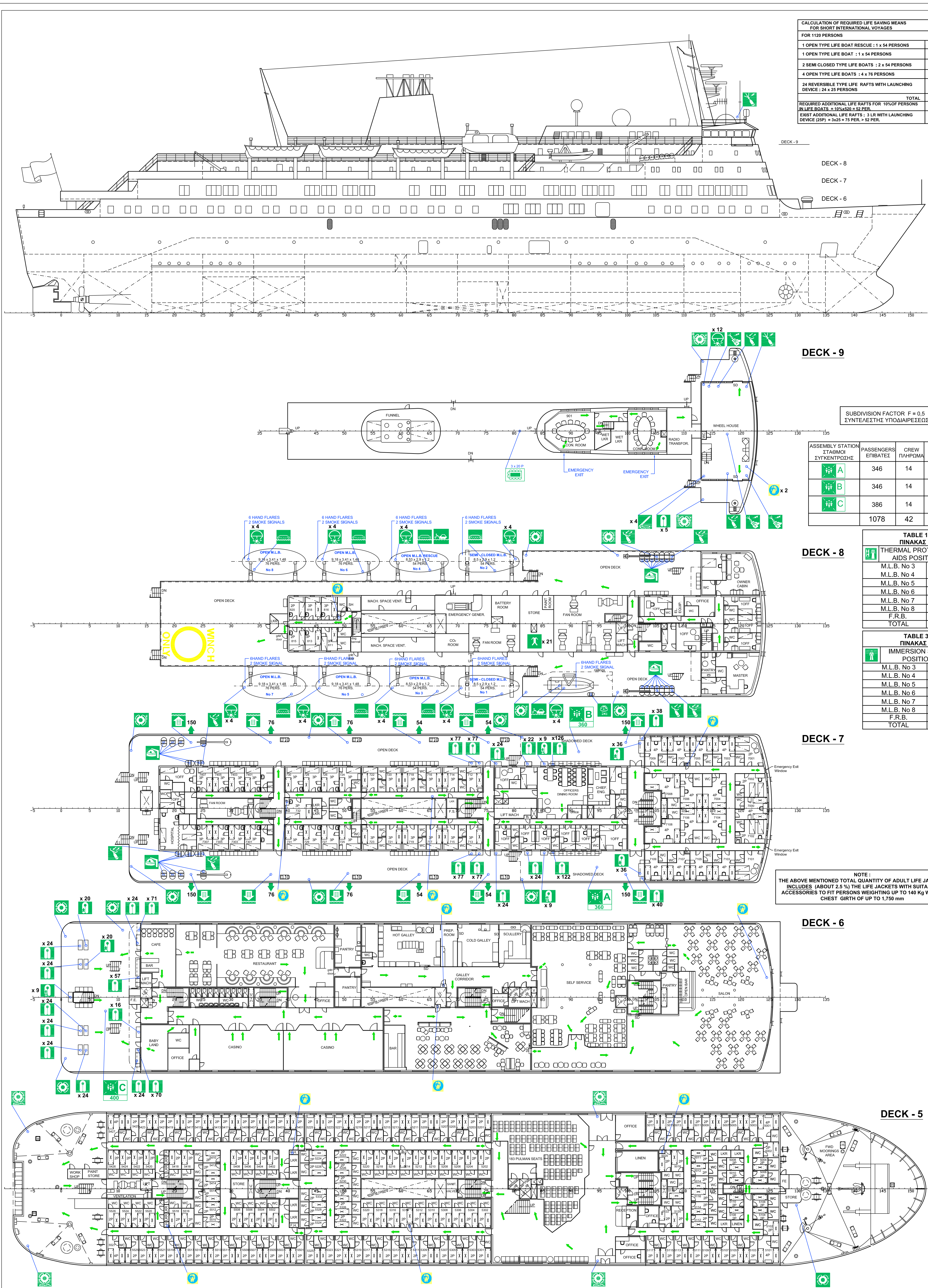
TABLE 3 ΠΙΝΑΚΑΣ 3	
IMMERSION SUITS POSITION	
M.L.B. No 3	3
M.L.B. No 4	3
M.L.B. No 5	3
M.L.B. No 6	3
M.L.B. No 7	3
M.L.B. No 8	3
F.R.B.	3
TOTAL	21

DESCRIPTION OF LIFE SAVING APPLIANCES ΠΕΡΙΓΡΑΦΗ ΣΩΣΤΙΚΩΝ ΜΕΣΩΝ		
1 OPEN TYPE MOTOR LIFE BOAT RESCUE (54 PERSONS) 1 ΑΝΟΙΚΤΟΥ ΤΥΠΟΥ ΜΗΧΑΝΟΚΙΝΗΤΗ ΣΩΣΤΙΚΙΑ ΛΕΜΒΟΣ ΔΙΑΣΩΣΕΩΣ (54 ΑΤΟΜΩΝ)	1 x 54 = 54 PERSONS	
1 OPEN TYPE MOTOR LIFE BOAT (54 PERSONS) 1 ΑΝΟΙΚΤΟΥ ΤΥΠΟΥ ΜΗΧΑΝΟΚΙΝΗΤΗ ΣΩΣΤΙΚΙΑ ΛΕΜΒΟΣ (54 ΑΤΟΜΩΝ)	1 x 54 = 54 PERSONS	
2 SEMI CLOSED TYPE MOTOR LIFE BOATS (54 PERSONS EACH) 2 ΗΜΙ-ΑΝΟΙΚΤΟΥ ΤΥΠΟΥ ΜΗΧΑΝΟΚΙΝΗΤΕΣ ΣΩΣΤΙΚΙΑ ΛΕΜΒΟΙ (54 ΑΤΟΜΩΝ ΕΚΑΣΤΗ)	2 x 54 = 108 PERSONS	
4 OPEN TYPE MOTOR LIFE BOATS (76 PERSONS EACH) 4 ΑΝΟΙΚΤΟΥ ΤΥΠΟΥ ΜΗΧΑΝΟΚΙΝΗΤΕΣ ΣΩΣΤΙΚΙΑ ΛΕΜΒΟΙ (76 ΑΤΟΜΩΝ ΕΚΑΣΤΗ)	4 x 76 = 304 PERSONS	
24 LIFE RAFTS REVERSIBLE TYPE WITH LAUNCHING DEVICE (25 PERSONS EACH) 24 ΣΩΣΤΙΚΙΑ ΣΧΕΔΙΑ ΜΕ ΜΕΣΟ ΚΑΘΑΡΠΕΣΕΩΣ ΑΥΤΟΑΝΑΡΤΗΡΟΜΕΝΕΣ (25 ΑΤΟΜΩΝ ΕΚΑΣΤΗ)	24 x 25 = 600 PERSONS	
TOTAL OF PERSONS ΣΥΝΟΛΟ ΑΤΟΜΩΝ	1120 PERSONS	

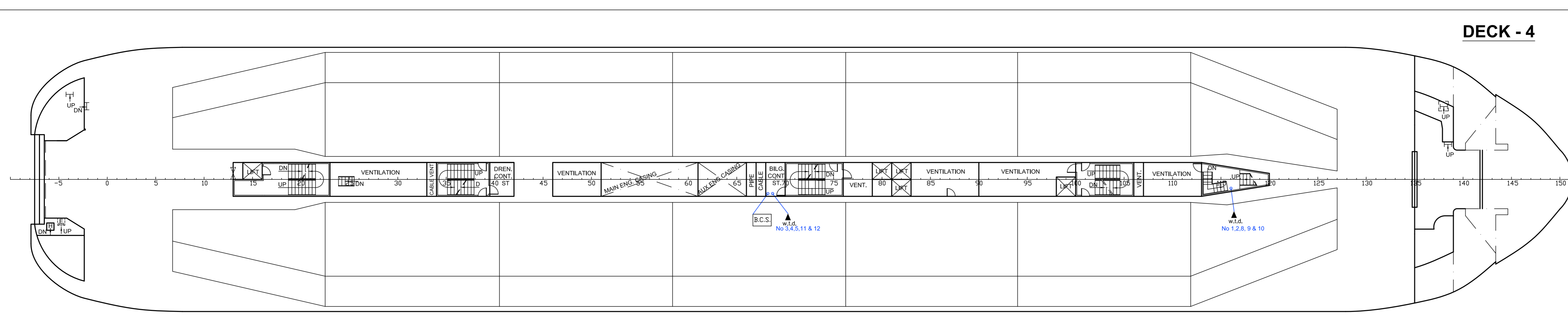
PRINCIPAL PARTICULARS		
LENGTH DA		122.00 m
LENGTH B.P		116.13 m
BREADTH(MAX)		22.00 m
DEPTH (Up to Deck-3)		8.30 m

TABLE 2 ΠΙΝΑΚΑΣ 2				
LIFE JACKETS ΑΤΟΜΙΚΑ ΣΩΣΤΙΚΙΑ				
PLACE ΤΟΠΟΘΕΣΙΑ	ADULT ΕΝΗΛΙΚΩΝ	ADDITIONAL 5% ΕΠΕΚΤΡΩΣΗ 5%	CHILDREN 10% TON ΠΑΙΔΙΑ 10% ΤΟΝ	INFANT 2.5% TON ΒΡΕΦΗ 2.5% ΤΟΝ
ASSEMBLY STATION A ΣΤΑΘΜΟΣ ΣΥΚΕΝΤΡΩΣΗΣ Α	346	18	36	9
ASSEMBLY STATION B ΣΤΑΘΜΟΣ ΣΥΚΕΝΤΡΩΣΗΣ Β	346	18	36	9
ASSEMBLY STATION C ΣΤΑΘΜΟΣ ΣΥΚΕΝΤΡΩΣΗΣ C	386	20	40	9
CREW CABINS ΚΑΜΙΝΕΣ ΠΛΗΡΩΜΑΤΟΣ & ΑΣΚΩΝ	42	0	0	0
WHEEL HOUSE ΓΕΥΡΑ	5	0	0	0
ENGINE CONTROL ROOM ΔΟΜΑΤΙΟ ΕΛΕΓΧΟΥ	5	0	0	0
TOTAL ΣΥΝΟΛΟ	1130	56	112	27
GRAND TOTAL ΟΛΙΚΟ ΣΥΝΟΛΟ	1186	112	112	27

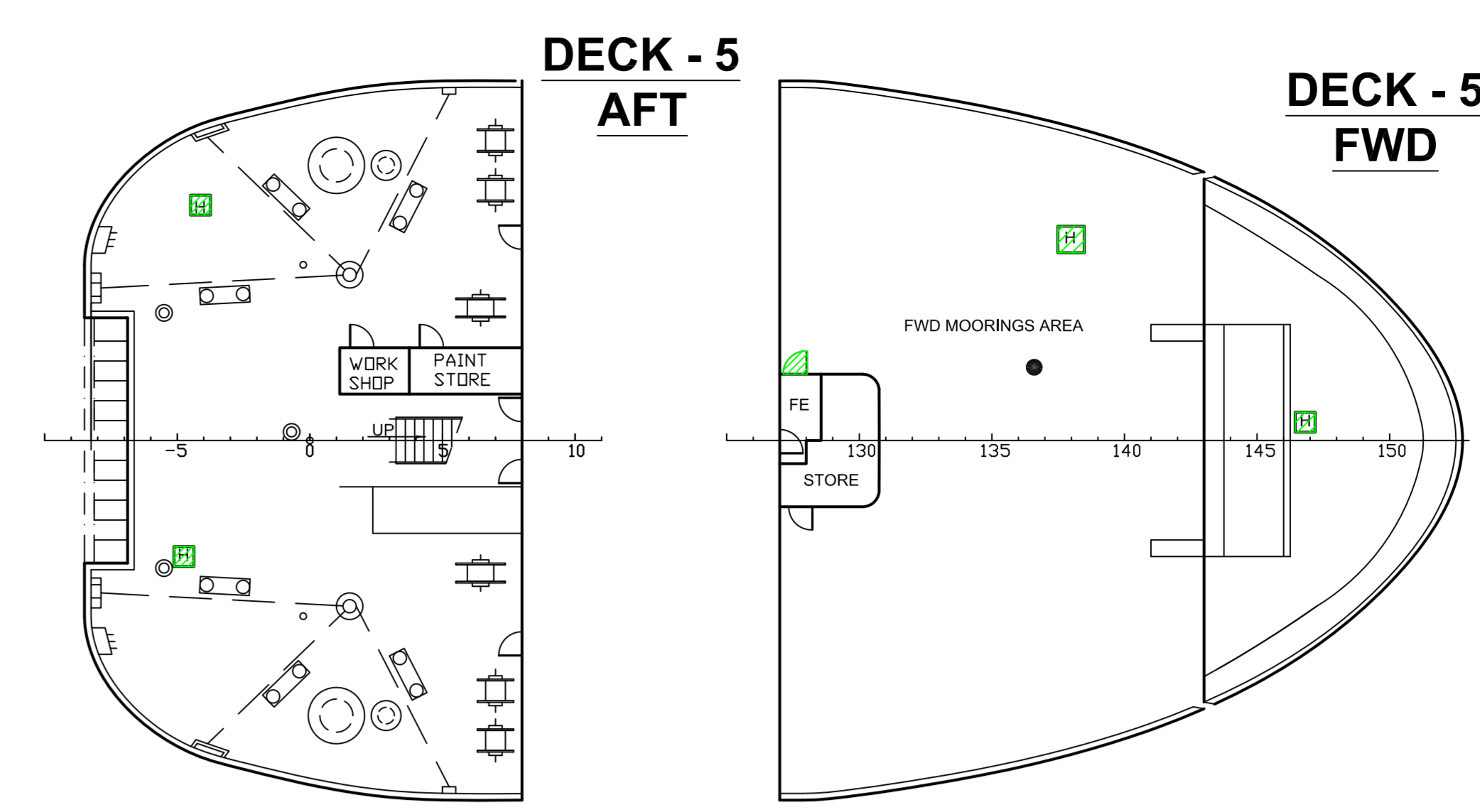
NOTE: THE ABOVE MENTIONED TOTAL QUANTITY OF ADULT LIFE JACKETS INCLUDES (ABOUT 2.5%) THE LIFE JACKETS WITH SUITABLE ACCESSORIES TO FIT PERSONS WEIGHING UP TO 140 Kg WITH A CHEST GIRTH OF UP TO 1,750 mm



SHIP'S NAME			
TITLE			
LIFE SAVING PLAN (UPPER DECKS & PROFILE)			
SCALE	DATE	DRAWING No.	
1 : 200	MAR. 2018	10732 - 08	

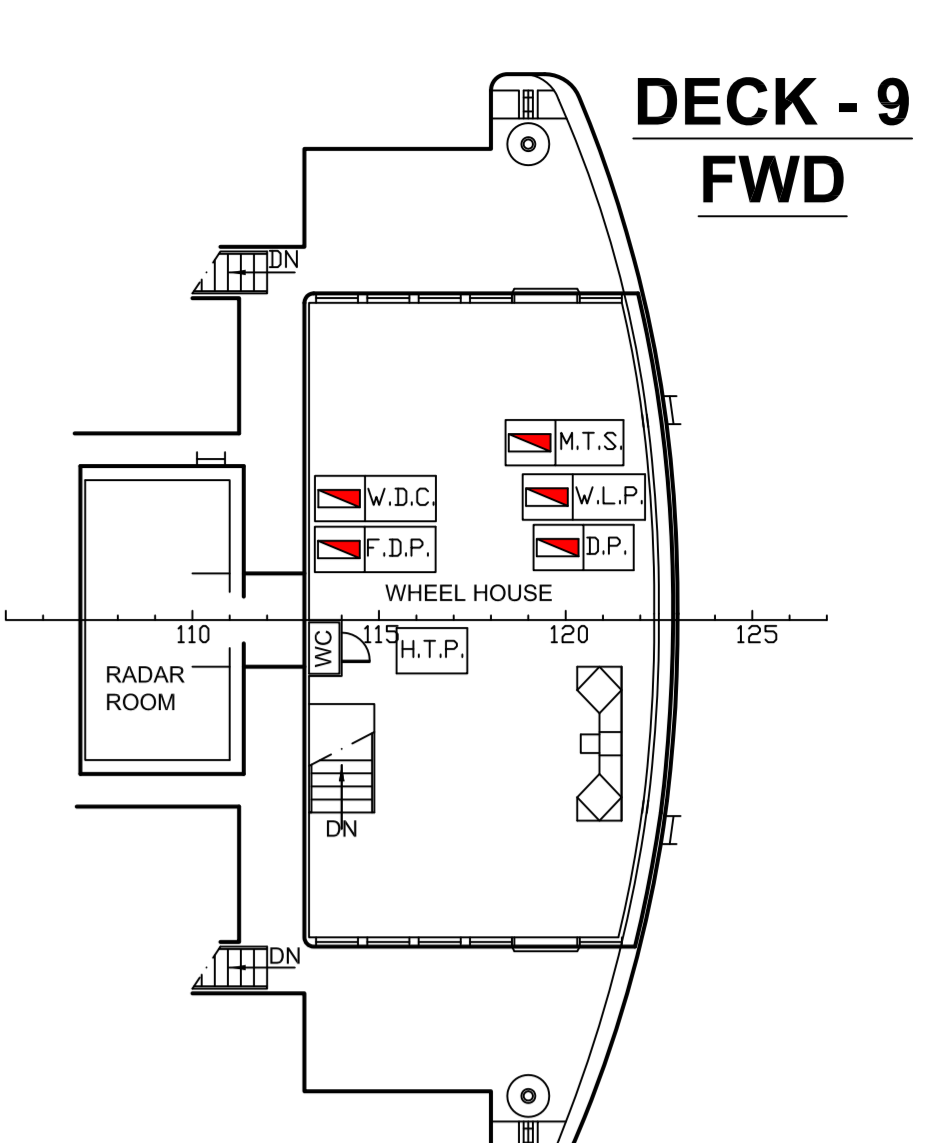


DECK - 4

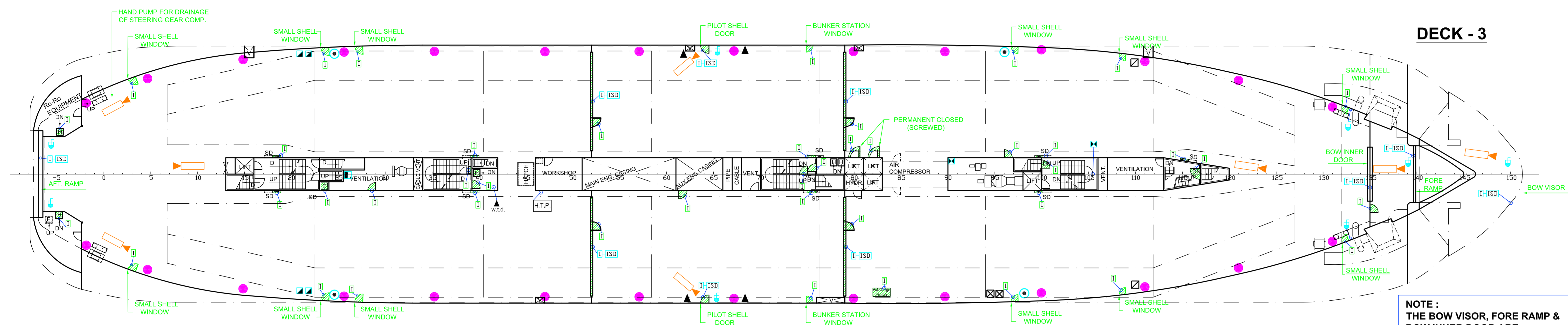


DECK - 5
AFT

DECK - 5
FWD

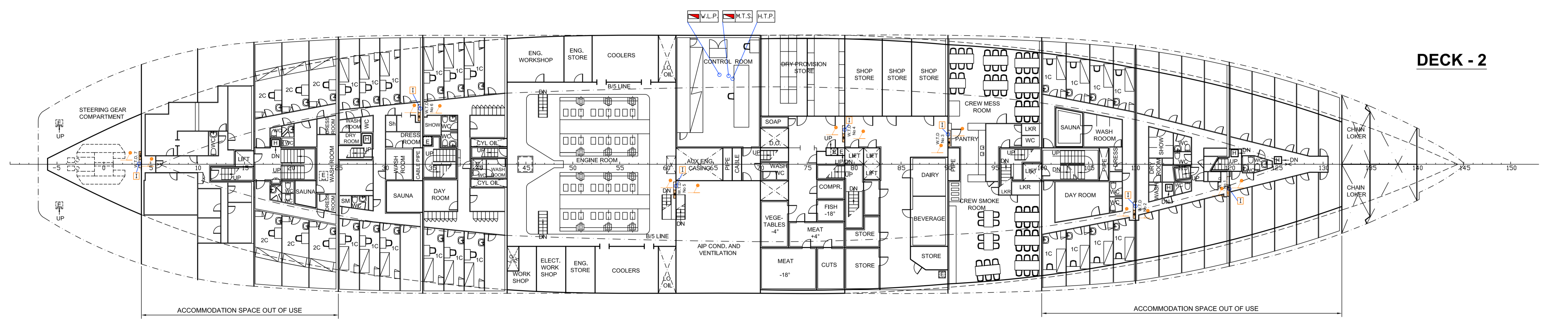


DECK - 9
FWD

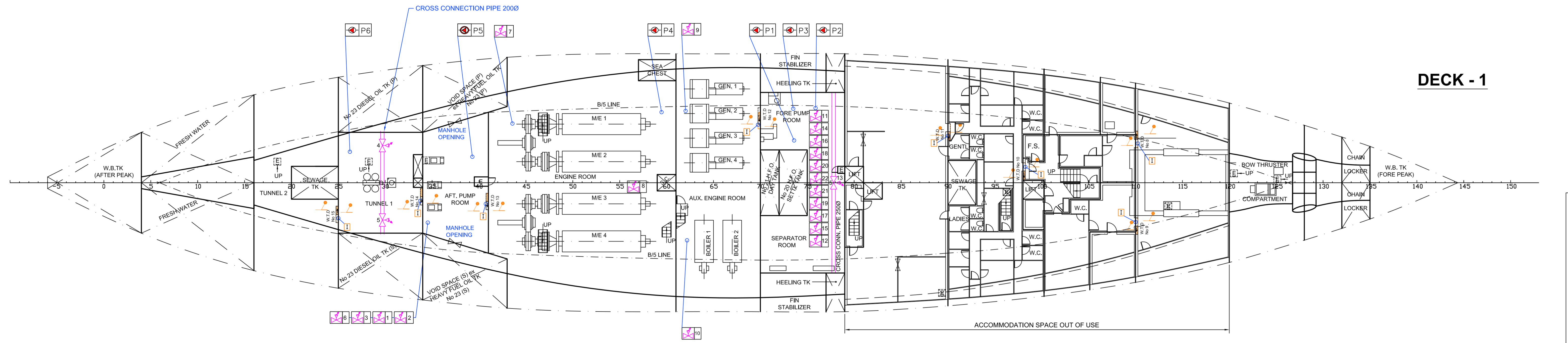


DECK - 3

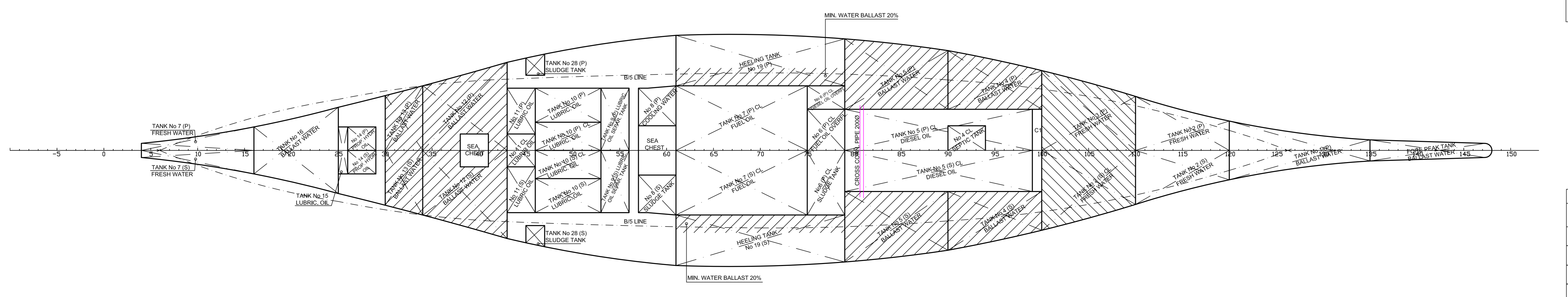
NOTE :
THE BOW VISOR, FORE RAMP &
BOW INNER DOOR ARE
PERMANENT CLOSED AND LOCKED



DECK - 2



DECK - 1



DAMAGE CONTROL PLAN'S SYMBOLS' LIST

SYMBOL	EXPLANATION
	HEELING & TRIM PUMP WITH Q = 410 m³/h
	BILGE / BALLAST & FIRE PUMP WITH Q = 95/80 m³/h
	BILGE / BALLAST PISTON PUMP WITH Q = 100 m³/h
	SPARE MAIN ENGINE COOLING WATER PUMP WITH Q = 540 m³/h (FOR EMERGENCY DRAINAGE OF ENGINE ROOM)
	EMERGENCY BILGE & FIRE PUMP WITH Q = 95/80 m³/h
	BILGE PUMP WITH Q = 80 m³/h
	LOCAL CONTROL OF SLIDING W.T. DOOR
	SLIDING WATER TIGHT DOOR No 1 to No 15
	WEATHER TIGHT DOOR
	LIMIT SWITCH THAT PROVIDES INDICATION (OPEN - CLOSED) AT THE NAVIGATION BRIDGE
	WEATHER TIGHT HATCH COVER
	LIMIT SWITCH THAT PROVIDES INDICATION (CLOSED - SECURED) AT THE NAVIGATION BRIDGE
	150 Ø DECK 3 SCUPPER
	WATER LEAKAGE DETECTOR
	CAMERA
	REMOTE CONTROL OF FORE PEAK VALVE
	VALVE REMOTE CONTROLLED FROM BILGE CONTROL STATION (SEE TABLE 1)
	BILGE CONTROL STATION
	HEELING TANKS AND TRIM REMOTE CONTROL VALVES
	REMOTE CONTROL STATION FOR WATER TIGHT DOOR
	REMOTE CONTROL (ONLY CLOSURE) AND INDICATION PANEL (OPEN - CLOSED) OF WATER TIGHT DOORS
	FLOOD DOOR
	FLOOD DOORS' INDICATION (OPEN - CLOSED) PANEL
	MONITOR FOR TELEVISION SURVEILLANCE
	WATER LEAKAGE CONTROL PANEL
	WEATHER TIGHT & SHELL DOORS INDICATION (OPEN - CLOSED) PANEL
	EMERGENCY STOP OF SEWAGE PUMP
	CONTROL PANEL OF FLOOD DOORS
	MAN. STATION FOR DRAINAGE PIPE VENTILS WHICH CLOSE SECTIONS 1 - 3
	MANEUVER STATION FOR SWIMMING POOL PIPE VENTIL
	MAN. STATION FOR DRAINAGE PIPE SIDE VENTIL FOR SECTION 4
	MAN. STATION FOR DRAINAGE PIPE SIDE VENTILS WHICH CLOSE SECTION 5-7
	MAN. STATION FOR DRAINAGE PIPE SIDE VENTILS WHICH CLOSE SECTION 8, 10 & 12
	MAN. STATION FOR DRAINAGE PIPE SIDE VENTIL FOM SECTION 9
	SEA WATER BALLAST
	FRESH WATER BALLAST

TABLE 1
REMOTE CONTROLLED VALVES

1	BILGE WELL Fr. 16 (C)
2	BILGE WELL FROM DK - 2 Fr 12/13
3	BILGE WELL Fr. 25
4	D.O. TANK No 23 (S)
5	D.O. TANK No 23 (P)
6	BILGE WELL Fr. 34 (S)
7	BILGE WELL Fr. 41 (P)
8	BILGE WELL Fr. 60 (S)
9	BILGE WELL Fr. 61 (P)
10	BILGE WELL Fr. 61 (S)
11	BILGE WELL Fr. 70 (P)
12	BILGE WELL Fr. 70 (S)
13	HEELING TANK
14	BILGE WELL Fr. 79 (P)
15	BILGE WELL Fr. 79 (S)
16	BILGE WELL Fr. 90 (P)
17	BILGE WELL Fr. 90 (S)
18	BILGE WELL Fr. 100 (P)
19	BILGE WELL Fr. 100 (S)
20	BILGE WELL Fr. 110 (P)
21	BILGE WELL Fr. 110 (S)
22	BILGE WELL Fr. 120 (C)

PRINCIPAL PARTICULARS

LENGTH O.A	122.00 m
LENGTH B.P	116.13 m
BREADTH(MAX)	22.00 m
DEPTH (Up to Deck-3)	8.30 m

- NOTES :
- THE SLIDING WATER TIGHT DOORS No 1 - No 15 COMPLY WITH REG. 15 PARAGRAPH 6.1 & 6.4 OF CHAPTER 8 - 1 OF SOLAS.
 - THE MASTER OR THE DESIGNATED OFFICER SHALL ENSURE THAT NO PASSENGERS ARE ALLOWED ACCESS TO AN ENCLOSED RO-RO DECK WHEN THE SHIP IS UNDERWAY.
 - SCUPPERS ON DECK-3 SHALL KEPT OPEN AT SEA.
 - THE MASTER SHALL ENSURE THAT AN EFFECTIVE SYSTEM OF SUPERVISION AND REPORTING OF THE CLOSING AND OPENING OF THE DOORS REFERRED IN REG. 20-1, PAR. 2 OF SOLAS IS IMPLEMENTED.
 - THE MASTER SHALL ENSURE, BEFORE THE SHIP PROCEEDS ON ANY VOYAGE, THAT AN ENTRY IN THE LOG BOOK IS MADE OF THE TIME OF THE LAST CLOSING OF THE DOORS REFERRED TO ABOVE ITEM 4 AND THE TIME OF ANY OPENING OF PARTICULAR DOORS.
 - THE MASTER SHALL ENSURE THAT AN EFFECTIVE SYSTEM OF SUPERVISION AND REPORTING OF THE CLOSING AND OPENING OF DOORS THAT GIVE ACCESS TO SPACES BELOW BULKHEAD DECK IS IMPLEMENTED.
 - THE MASTER SHALL ENSURE, BEFORE THE SHIP LEAVES THE BERTH ON ANY VOYAGE, THAT AN ENTRY IN THE LOG BOOK IS MADE OF THE TIME OF THE LAST CLOSING OF THE DOORS THAT GIVE ACCESS BELOW BULKHEAD DECK.
 - ALL DOORS THAT GIVE ACCESS TO SPACES BELOW BULKHEAD DECK SHALL BE CLOSED BEFORE THE SHIP LEAVES THE BERTH ON ANY VOYAGE AND SHALL REMAIN CLOSED TILL THE SHIP IS AT ITS NEXT BERTH.

REVISIONS		
REVISION	DATE	DESCRIPTION
A	14-05-2010	DESIGNED IN AUTOCAD
B	04-06-2010	DESIGN OF CROSS CONNECTION BETWEEN NO 8 & 9, TRS (PASS)
C	20-08-2010	CORRECTIONS FOR THE COMPLIANCE WITH SOLAS 74

SHIP'S NAME			
TITLE	DAMAGE CONTROL PLAN		
SCALE	DATE	DRAWING No	
1 : 200	AUGUST 2010	10732 -15	